



✓ Just Measure

3D MetriSoft

Metrology solutions



CMM STYLUS CATALOG

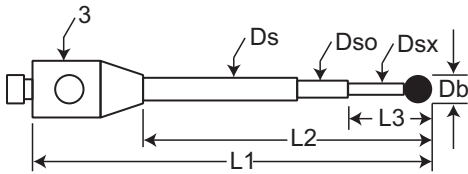


Table of Contents

M2 styli, extensions, and accessories.....	2-11
M3 styli, extensions, and accessories.....	12-18
Therm-X™ ultra light M3 tooling.....	19-26
M5 styli and extensions.....	27-46
M5 adapter plates.....	47-48
M5 accessories.....	49-52
Probe racks.....	53
Cube Squared™	54
X-Changer™	54
Calibration spheres.....	55
Adapter plate for Klingelnberg gear measuring center	55
Styli for Faro arms.....	56-57
Design Your Own™ standard probe.....	58
Design Your Own™ miniature probe.....	59
Design Your Own™ disk probe.....	60
Order form.....	61
About Q-Mark.....	62
Renishaw cross reference list.....	63-68
Zeiss cross reference list.....	69-73

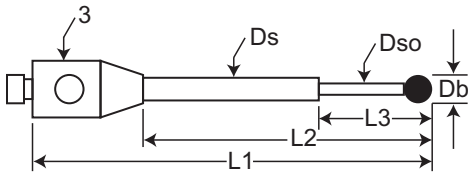
M2 Threads

0.3 mm carbide ball



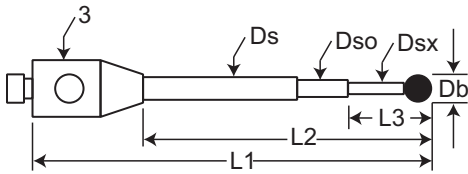
Part Number	Db	Ds	Dso	Dsx	L1	L2	L3	Wt
TM2-0310-C	0.3	1.0	0.5	0.2	10.0	5.0	1.3	<1
TM2-0313-C	0.3	1.0	0.5	0.2	13.0	8.0	1.3	<1
TM2-0315-C	0.3	1.0	0.5	0.2	15.0	10.0	1.3	<1
TM2-0318-C	0.3	1.0	0.5	0.2	18.0	13.0	1.3	<1
TM2-0319-C	0.3	1.0	0.5	0.2	19.0	14.0	1.3	<1

0.3 mm ruby ball



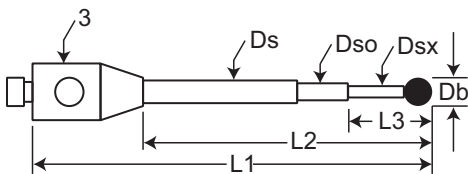
Part Number	Db	Ds	Dso	L1	L2	L3	Wt
TM2-0310-R	0.3	1.0	0.2	10.0	5.0	2.3	<1
TM2-0318-R	0.3	1.0	0.2	18.0	13.0	2.3	<1
TM2-0323-R	0.3	1.0	0.2	23.0	13.0	2.3	<1

0.4 mm carbide ball



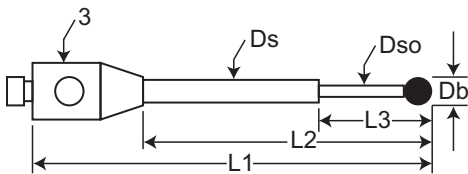
Part Number	Db	Ds	Dso	Dsx	L1	L2	L3	Wt
TM2-0410-C	0.4	1.0	0.5	0.25	10.0	5.0	2.0	<1
TM2-0415-C	0.4	1.0	0.5	0.25	15.0	10.0	2.0	<1
TM2-0418-C	0.4	1.0	0.5	0.25	18.0	13.0	2.0	<1

0.5 mm carbide ball



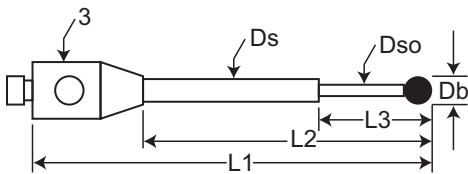
Part Number	Db	Ds	Dso	Dsx	L1	L2	L3	Wt
TM2-0510-C	0.5	1.0	0.6	0.3	10.0	5.0	2.5	<1
TM2-0513-C	0.5	1.0	0.6	0.3	13.0	8.0	2.5	<1
TM2-0515-C	0.5	1.0	0.6	0.3	15.0	10.0	2.5	<1
TM2-0518-C	0.5	1.0	0.6	0.3	18.0	13.0	2.5	<1
TM2-0520-C	0.5	1.0	0.6	0.3	20.0	15.0	2.5	<1

0.5 mm ruby ball



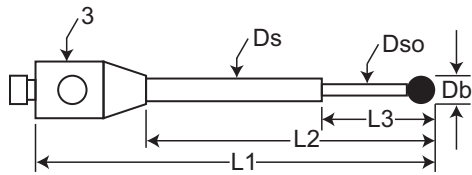
Part Number	Db	Ds	Dso	L1	L2	L3	Wt
TM2-0510-R	0.5	1.0	0.3	10.0	5.0	2.5	<1
TM2-0518-R	0.5	1.0	0.3	18.0	13.0	2.5	<1
TM2-0519-R	0.5	1.0	0.3	19.0	13.0	2.5	<1

0.6 mm carbide ball



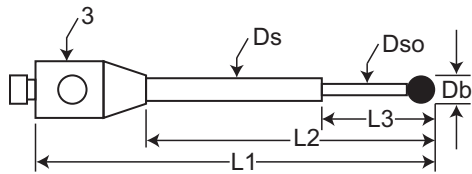
Part Number	Db	Ds	Dso	L1	L2	L3	Wt
TM2-0610-C	0.6	1.0	0.4	10.0	5.0	4.0	<1
TM2-0615-C	0.6	1.0	0.4	15.0	10.0	4.0	<1
TM2-0618-C	0.6	1.0	0.4	18.0	13.0	4.0	<1
TM2-0620-C	0.6	1.0	0.4	20.0	15.0	4.0	<1

M2 Threads



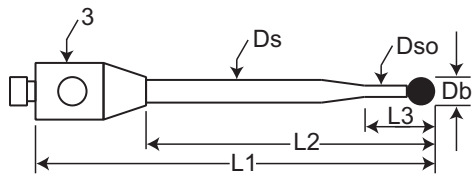
0.6 mm ruby ball

Part Number	Db	Ds	Dso	L1	L2	L3	Wt
TM2-0610	0.6	1.0	0.4	10.0	5.0	4.0	<1
TM2-0615	0.6	1.0	0.4	15.0	10.0	4.0	<1
TM2-0618	0.6	1.0	0.4	18.0	13.0	4.0	<1
TM2-0620	0.6	1.0	0.4	20.0	15.0	4.0	<1



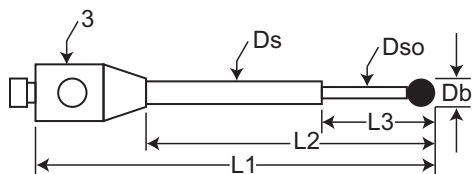
0.8 mm ball, stepped shaft

Part Number	Db	Ds	Dso	L1	L2	L3	Wt
TM2-0812	0.8	1.0	0.6	12.0	7.0	4.0	<1
TM2-0815	0.8	1.0	0.6	15.0	10.0	4.0	<1
TM2-0818	0.8	1.0	0.6	18.0	13.0	4.0	<1
TM2-0820	0.8	1.0	0.6	20.0	15.0	4.0	<1



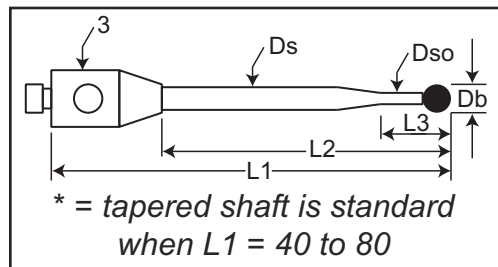
0.8 mm ball, tapered shaft

Part Number	Db	Ds	Dso	L1	L2	L3	Wt
TM2-0812-T	0.8	1.0	0.6	12.0	7.0	4.3	<1
TM2-0815-T	0.8	1.0	0.6	15.0	10.0	4.3	<1
TM2-0818-T	0.8	1.0	0.6	18.0	13.0	4.3	<1
TM2-0820-T	0.8	1.0	0.6	20.0	15.0	4.3	<1



1.0 mm ball, stepped shaft

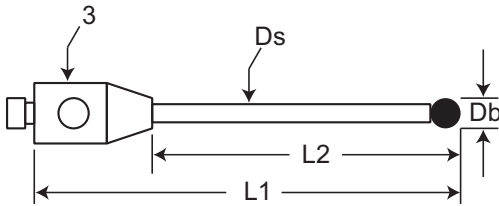
Part Number	Db	Ds	Dso	L1	L2	L3	Wt
TM2-1010.5	1.0	1.0	0.7	10.5	5.5	5.0	<1
TM2-1011.5	1.0	1.0	0.7	11.5	6.5	5.0	<1
TM2-1012	1.0	1.0	0.7	12.0	7.0	5.0	<1
TM2-1013	1.0	1.0	0.7	13.0	8.0	5.0	<1
TM2-1015.5	1.0	1.0	0.7	15.5	10.5	5.0	<1
TM2-1016	1.0	1.0	0.7	16.0	11.0	5.0	<1
TM2-1018	1.0	1.0	0.7	18.0	13.0	5.0	<1
TM2-1020	1.0	1.0	0.7	20.0	15.0	5.0	<1
TM2-1022	1.0	1.0	0.7	22.0	14.0	5.0	<1
TM2-1025	1.0	1.0	0.7	25.0	17.0	5.0	<1
TM2-1027	1.0	1.0	0.7	27.0	19.0	5.0	<1
TM2-1027.5	1.0	1.0	0.7	27.5	19.5	5.0	<1
TM2-1030	1.0	1.0	0.7	30.0	22.0	5.0	<1
TM2-1041	1.0	1.5	0.7	41.0	33.0	5.0	<1
TM2-1065	1.0	1.5	0.7	65.0	57.0	5.0	<1
TM2-1080	1.0	1.5	0.7	80.0	72.0	5.0	<1



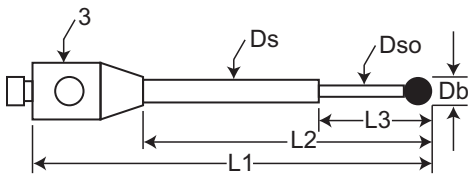
***NOTE: For a silicon nitride ball, add -SN to any part number.**

M2 Threads

1.0 mm ball, straight shaft

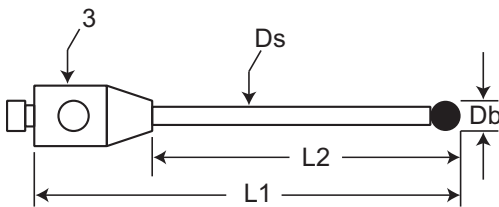


Part Number	Db	Ds	L1	L2	Wt
TM2-1007	1.0	0.7	7.0	2.0	<1
TM2-1010	1.0	0.7	10.0	5.0	<1
TM2-1015-DS.7	1.0	0.7	15.0	10.0	<1
TM2-1020-DS.7	1.0	0.7	20.0	15.0	<1
TM2-1020-DS.8	1.0	0.8	20.0	8.0	<1
TM2-1025-DS.7	1.0	0.7	25.0	17.0	<1
TM2-1030-DS.7	1.0	0.7	30.0	22.0	<1
TM2-1034-DS.7	1.0	0.7	34.0	26.0	<1
TM2-1047-DS.7	1.0	0.7	47.0	39.0	<1
TM2-1055-DS.7	1.0	0.7	55.0	47.0	<1



1.5 mm ball, stepped shaft

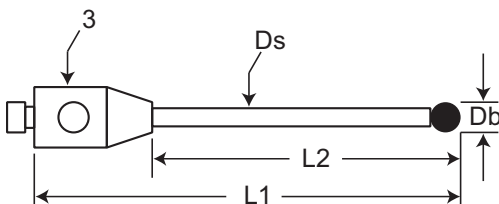
Part Number	Db	Ds	Dso	L1	L2	L3	Wt
TM2-1530	1.5	1.5	1.0	30.0	22.0	8.0	<1
TM2-1540	1.5	1.5	1.0	40.0	32.0	8.0	<1



1.5 mm ball, straight shaft

Part Number	Db	Ds	L1	L2	Wt
TM2-1510	1.5	1.0	10.0	5.0	<1
TM2-1515	1.5	1.0	15.0	10.0	<1
TM2-1520	1.5	1.0	20.0	15.0	<1
TM2-1525	1.5	1.0	25.0	20.0	<1
TM2-1530-DS1	1.5	1.0	30.0	22.0	<1
TM2-1531-DS1	1.5	1.0	31.0	23.0	<1
TM2-1535-DS1	1.5	1.0	35.0	27.0	<1

2.0 mm ball

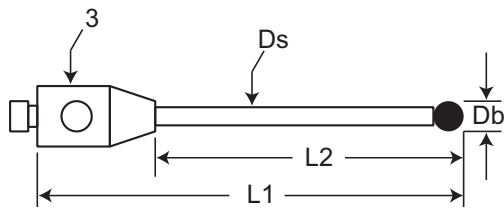


Part Number	Db	Ds	L1	L2	Wt
TM2-2010	2.0	1.0	10.0	5.0	1
TM2-2011	2.0	1.0	11.0	6.0	1
TM2-2013	2.0	1.0	13.0	8.0	1
TM2-2015	2.0	1.0	15.0	10.0	1
TM2-2016	2.0	1.0	16.0	8.0	1
TM2-2018	2.0	1.0	18.0	10.0	1
TM2-2020	2.0	1.0	20.0	12.0	1
TM2-2021	2.0	1.0	21.0	16.0	1
TM2-2025	2.0	1.0	25.0	20.0	1
TM2-2030	2.0	1.5	30.0	23.0	1
TM2-2031	2.0	1.5	31.0	24.0	1
TM2-2033	2.0	1.5	33.0	26.0	1
TM2-2035	2.0	1.5	35.0	28.0	1

continued on next page

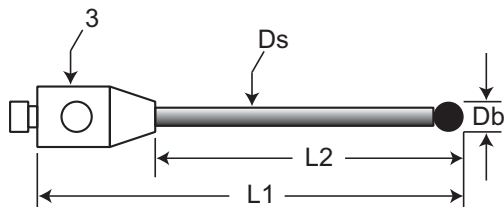
***NOTE: For a silicon nitride ball, add -SN to any part number.**

M2 Threads



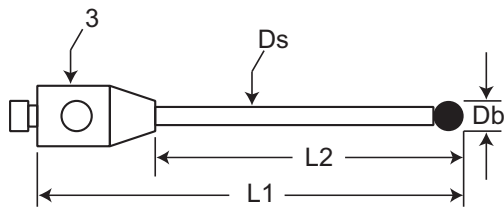
2.0 mm ball *continued from previous page*

Part Number	Db	Ds	L1	L2	Wt
TM2-2039	2.0	1.5	39.0	32.0	1
TM2-2040	2.0	1.5	40.0	33.0	1
TM2-2041	2.0	1.5	41.0	34.0	1
TM2-2042	2.0	1.5	42.0	35.0	1
TM2-2047	2.0	1.5	47.0	40.0	1
TM2-2050	2.0	1.5	50.0	43.0	1
TM2-2051	2.0	1.5	51.0	44.0	1
TM2-2055	2.0	1.5	55.0	48.0	1
TM2-2060	2.0	1.5	60.0	53.0	1
TM2-2065	2.0	1.5	65.0	58.0	1
TM2-2070	2.0	1.5	70.0	63.0	1



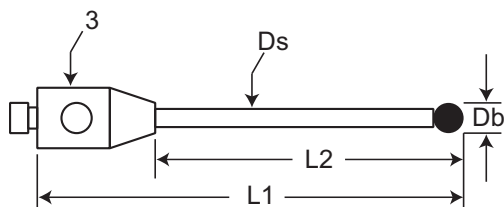
2.0 mm ball, graphite shaft

Part Number	Db	Ds	L1	L2	Wt
TM2-2070-G	2.0	1.5	70.0	63.0	1.0



2.5 mm ball

Part Number	Db	Ds	L1	L2	Wt
TM2-2510	2.5	1.5	10.0	5.0	1.0
TM2-2520	2.5	1.5	20.0	15.0	1.0
TM2-2522	2.5	1.5	22.0	17.0	1.0
TM2-2530	2.5	1.5	30.0	25.0	1.0
TM2-2531	2.5	1.5	31.0	24.0	1.0
TM2-2540	2.5	1.5	40.0	33.0	1.0
TM2-2541	2.5	1.5	41.0	34.0	1.0
TM2-2550	2.5	1.5	50.0	43.0	1.0



3.0 mm ball

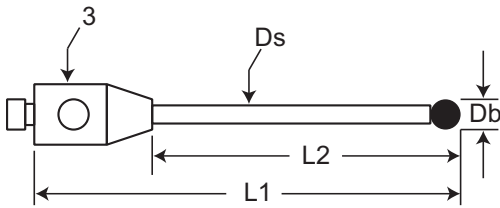
Part Number	Db	Ds	L1	L2	Wt
TM2-3010	3.0	1.5	10.0	5.0	1
TM2-3020	3.0	1.5	20.0	15.0	1
TM2-3021	3.0	1.5	21.0	16.0	1
TM2-3022	3.0	1.5	22.0	17.0	1
TM2-3024	3.0	1.5	24.0	19.0	1
TM2-3030	3.0	1.5	30.0	23.0	2
TM2-3031	3.0	1.5	31.0	24.0	2
TM2-3031.5	3.0	1.5	31.5	24.5	2
TM2-3033	3.0	1.5	33.0	26.0	2
TM2-3040	3.0	2.0	40.0	33.0	2
TM2-3041	3.0	2.0	41.0	34.0	2
TM2-3041.5	3.0	2.0	41.5	34.5	2
TM2-3050	3.0	2.0	50.0	43.0	2

continued on next page

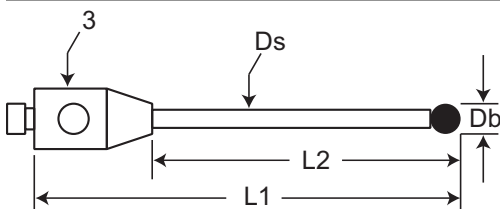
***NOTE: For a silicon nitride ball, add -SN to any part number.**

M2 Threads

3.0 mm ball *continued from previous page*



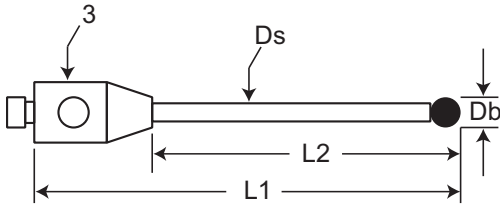
Part Number	Db	Ds	L1	L2	Wt
TM2-3051	3.0	2.0	51.0	44.0	2
TM2-3051.5	3.0	2.0	51.5	44.5	2
TM2-3053	3.0	2.0	53.0	46.0	2
TM2-3058	3.0	2.0	58.0	51.0	2
TM2-3060	3.0	2.0	60.0	53.0	2
TM2-3063	3.0	2.0	63.0	56.0	2
TM2-3071	3.0	2.0	71.0	64.0	2
TM2-3075	3.0	2.0	75.0	68.0	2
TM2-3090	3.0	2.0	90.0	83.0	2



3.0 mm ball, ceramic shaft

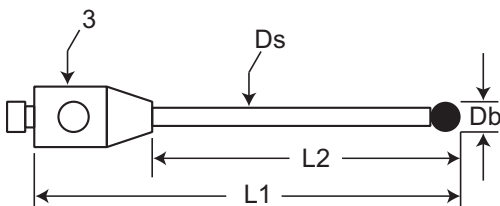
Part Number	Db	Ds	L1	L2	Wt
TM2-3051-C	3.0	2.0	51.0	44.0	1
TM2-3051.5-C	3.0	2.0	51.5	44.5	1

4.0 mm ball



Part Number	Db	Ds	L1	L2	Wt
TM2-4010	4.0	2.0	10.0	5.0	2
TM2-4012	4.0	2.0	12.0	7.0	2
TM2-4020	4.0	2.0	20.0	15.0	2
TM2-4022	4.0	2.0	22.0	17.0	2
TM2-4025	4.0	2.0	25.0	18.0	2
TM2-4030	4.0	2.0	30.0	23.0	2
TM2-4032	4.0	2.0	32.0	25.0	2
TM2-4040	4.0	2.0	40.0	33.0	2
TM2-4042	4.0	2.0	42.0	35.0	2
TM2-4050	4.0	2.0	50.0	43.0	2
TM2-4052	4.0	2.0	52.0	45.0	2

4.0 mm ball, ceramic shaft

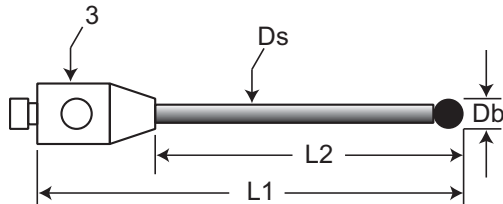


Part Number	Db	Ds	L1	L2	Wt
TM2-4030-C	4.0	2.0	30.0	23.0	1
TM2-4032-C	4.0	2.0	32.0	25.0	1
TM2-4042-C	4.0	2.0	42.0	35.0	1
TM2-4050-C	4.0	2.0	50.0	43.0	1
TM2-4052-C	4.0	2.0	52.0	45.0	1
TM2-4060-C	4.0	2.5	60.0	53.0	2
TM2-4090-C	4.0	2.5	90.0	83.0	2
TM2-40100-C	4.0	2.5	100.0	93.0	2

***NOTE: For a silicon nitride ball, add -SN to any part number.**

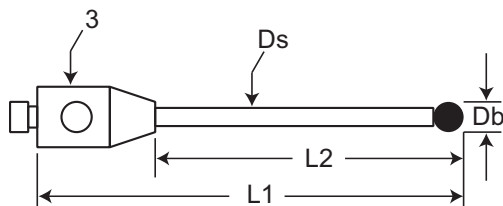
M2 Threads

4.0 mm ball, graphite shaft



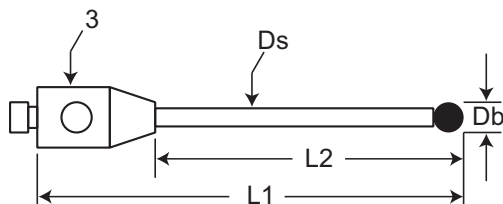
Part Number	Db	Ds	L1	L2	Wt
TM2-4030-G	4.0	2.0	30.0	25.0	2
TM2-4032-G	4.0	2.0	32.0	27.0	2
TM2-4040-G	4.0	2.0	40.0	35.0	2
TM2-4042-G	4.0	2.0	42.0	37.0	2
TM2-4050-G	4.0	2.0	50.0	43.0	2
TM2-4052-G	4.0	3.0	52.0	45.0	2
TM2-4060-G	4.0	2.5	60.0	53.0	2
TM2-4090-G	4.0	2.5	90.0	83.0	2
TM2-40100-G	4.0	3.0	100.0	93.0	2
TM2-40102-G	4.0	3.0	102.0	95.0	2

5.0 mm ball



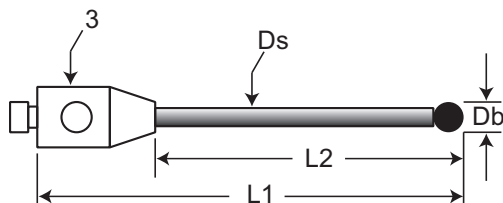
Part Number	Db	Ds	L1	L2	Wt
TM2-5010	5.0	2.5	10.0	5.0	2
TM2-5020	5.0	2.5	20.0	14.0	2
TM2-5022	5.0	2.5	22.0	16.0	2
TM2-5022.5	5.0	2.5	22.5	16.5	2
TM2-5030	5.0	2.5	30.0	24.0	3
TM2-5032	5.0	2.5	32.0	26.0	3
TM2-5032.5	5.0	2.5	32.5	26.5	3
TM2-5035	5.0	2.5	35.0	29.0	3
TM2-5040	5.0	2.5	40.0	34.0	3
TM2-5042.5	5.0	2.5	42.5	36.5	3
TM2-5050	5.0	2.5	50.0	44.0	4
TM2-5052	5.0	2.5	52.0	46.0	4
TM2-5052.5	5.0	2.5	53.5	47.5	4
TM2-5053	5.0	2.5	53.0	47.0	4
TM2-50100	5.0	2.5	100.0	93.0	5

5.0 mm ball, ceramic shaft



Part Number	Db	Ds	L1	L2	Wt
TM2-5050-C	5.0	2.5	50.0	44.0	2
TM2-5052.5-C	5.0	2.5	52.5	46.5	2

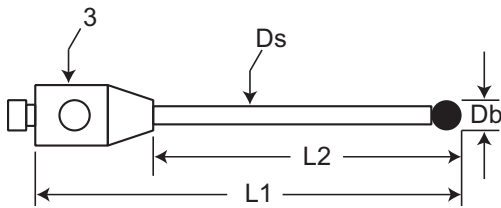
5.0 mm ball, graphite shaft



Part Number	Db	Ds	L1	L2	Wt
TM2-5050-G	5.0	2.5	50.0	44.0	2
TM2-5052.5-G	5.0	3.0	52.5	46.5	2
TM2-5060-G	5.0	2.5	60.0	53.0	2
TM2-5070-G	5.0	2.5	70.0	63.0	2
TM2-5080-G	5.0	2.5	80.0	73.0	2
TM2-50100-G	5.0	2.5	100.0	93.0	2
TM2-50115-G	5.0	2.5	115.0	108.0	2

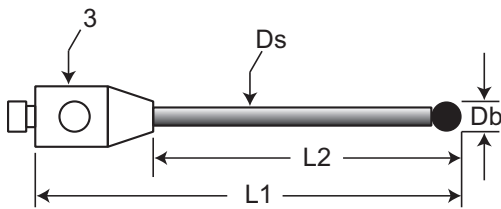
***NOTE: For a silicon nitride ball, add -SN to any part number.**

M2 Threads



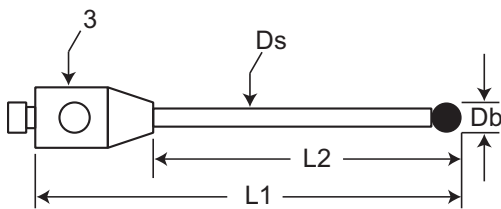
6.0 mm ball

Part Number	Db	Ds	L1	L2	Wt
TM2-6010	6.0	2.0	10.0	5.0	2
TM2-6020	6.0	2.0	20.0	13.0	2
TM2-6025	6.0	2.5	25.0	18.0	2
TM2-6030	6.0	2.5	30.0	23.0	2
TM2-6050	6.0	2.5	50.0	43.0	3



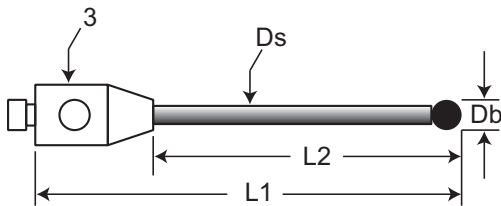
6.0 mm ball, graphite shaft

Part Number	Db	Ds	L1	L2	Wt
TM2-6030-G	6.0	3.0	30.0	23.0	1
TM2-6040-G	6.0	3.0	40.0	33.0	1
TM2-6053-G	6.0	3.0	53.0	46.0	1
TM2-6060-G	6.0	3.0	60.0	53.0	2
TM2-6070-G	6.0	3.0	70.0	63.0	3
TM2-6080-G	6.0	3.0	80.0	73.0	2
TM2-60100-G	6.0	3.0	100.0	93.0	2
TM2-60103-G	6.0	3.0	103.0	96.0	2



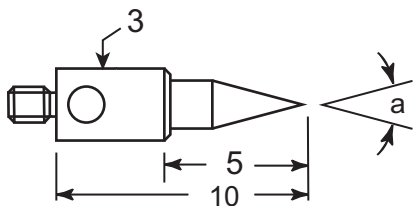
8.0 mm ball

Part Number	Db	Ds	L1	L2	Wt
TM2-8010	8.0	3.0	14.0	8.0	3
TM2-8015	8.0	3.0	15.0	8.0	3
TM2-8020	8.0	3.0	20.0	13.0	3
TM2-8025	8.0	3.0	25.0	18.0	3



8.0 mm ball, graphite shaft

Part Number	Db	Ds	L1	L2	Wt
TM2-8020-G	8.0	3.0	20.0	13.0	1
TM2-8050-G	8.0	3.0	50.0	43.0	1
TM2-8060-G	8.0	3.0	60.0	53.0	1
TM2-8080-G	8.0	3.0	80.0	73.0	1
TM2-80104-G	8.0	3.0	104.0	97.0	2

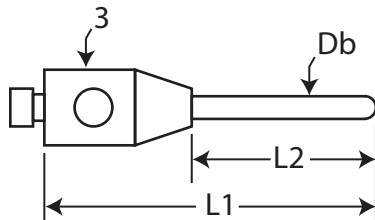


Pointed styli, stainless steel or carbide

Part Number	Angle "a"	Material	Wt
TM2-S30	30 degrees	Stainless steel	1
TM2-S60	60 degrees	Stainless steel	1
TM2-S30-C	30 degrees	Carbide	1
TM2-S60-C	60 degrees	Carbide	1
TM2-S90-C	90 degrees	Carbide	1

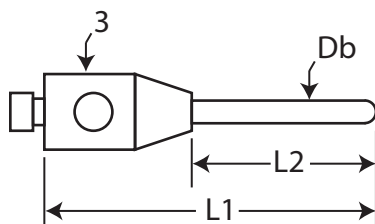
***NOTE: For a silicon nitride ball, add -SN to any part number.**

M2 Threads



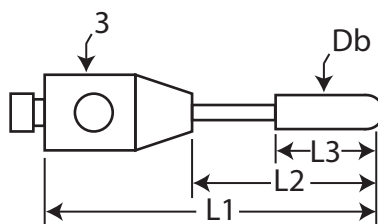
Cylinder styli, ruby

Part Number	Db	L1	L2	Wt
TM2-1015-B	1.0	15.0	8.0	1
TM2-1515-B	1.5	15.0	8.0	1



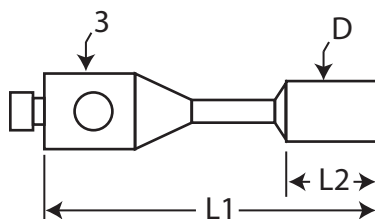
Cylinder styli, carbide

Part Number	Db	L1	L2	Wt
TM2-0310-BC	0.3	10.0	5.0	1
TM2-0515-BC	0.5	15.0	10.0	1
TM2-0715-BC	0.7	15.0	10.0	1
TM2-0720-BC	0.7	20.0	15.0	1
TM2-1015-BC	1.0	15.0	10.0	1
TM2-1020-BC	1.0	20.0	15.0	1
TM2-1030-BC	1.0	30.0	25.0	1
TM2-1036-BC	1.0	36.0	31.0	1
TM2-1520-BC	1.5	20.0	15.0	1
TM2-1540-BC	1.5	40.0	35.0	1
TM2-2016-BC	2.0	16.0	11.0	1
TM2-2040-BC	2.0	40.0	33.0	2
TM2-2048-BC	2.0	48.0	41.0	2



Cylinder styli, ruby, with carbide stem

Part Number	Db	L1	L2	L3	Wt
TM2-2021-B	2.0	21.0	16.0	7.2	1
TM2-2025-B	2.0	25.0	20.0	7.2	1
TM2-2035-B	2.0	35.0	30.0	7.2	1
TM2-2040-B	2.0	40.0	35.0	7.2	1
TM2-4020-B	4.0	20.0	15.0	10.0	2
TM2-4022-B	4.0	22.0	17.0	10.0	2
TM2-4025-B	4.0	25.0	20.0	10.0	2



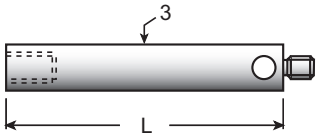
Cylinder styli, stainless steel

Part Number	Db	L1	L2	Wt
TM2-1511-CYL	1.5	11.0	1.5	1
TM2-3013-CYL	3.0	15.0	10.0	1

***NOTE: For a silicon nitride ball, add -SN to any part number.**

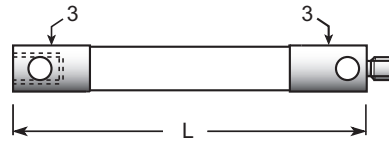
M2 Threads

Extensions, stainless steel



Part Number	L	Wt
VM2-5	5.0	1
VM2-7	7.0	1
VM2-10	10.0	1
VM2-15	15.0	1
VM2-20	20.0	1
VM2-25	25.0	1
VM2-30	30.0	2
VM2-35	35.0	2
VM2-40	40.0	2
VM2-50	50.0	3
VM2-60	60.0	3
VM2-75	75.0	4
VM2-90	90.0	5
VM2-100	100.0	6
VM2-110	110.0	7

Extensions, ceramic, with stainless steel ends



Part Number	L	Wt
VM2-20-C	20.0	1
VM2-30-C	30.0	1
VM2-40-C	40.0	1
VM2-50-C	50.0	1
VM2-60-C	60.0	2
VM2-70-C	70.0	2
VM2-100-C	100.0	2

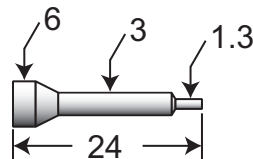
Extensions, graphite, with stainless steel ends



Part Number	L	Wt
VM2-20-G	20.0	1
VM2-30-G	30.0	1
VM2-40-G	40.0	1
VM2-50-G	50.0	1
VM2-60-G	60.0	1
VM2-70-G	70.0	1
VM2-90-G	90.0	1
VM2-100-G	100.0	1
VM2-140-G	140.0	2
VM2-150-G	150.0	2
VM2-300-G	300.0	3

Probe key - golf tee style

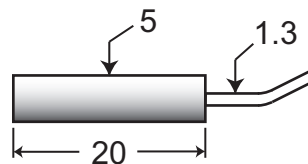
Hardened tool steel. Fits both M2 and M3 styli.



Part Number
PK2-PK3

Probe key - offset style

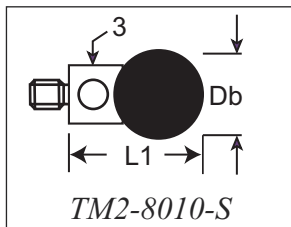
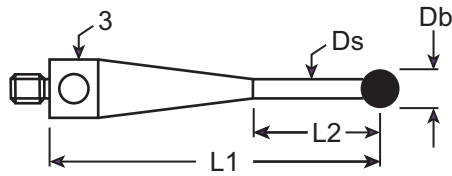
Hardened tool steel with stainless steel handle.



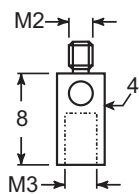
Part Number
PK2

M2 Threads

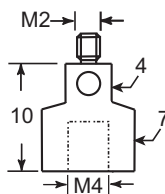
Stainless steel base and stem, one piece



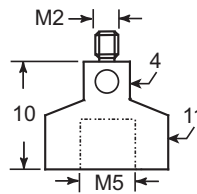
Part Number	Db	Ds	L1	L2	Wt	Equivalent
TM2-1010-S	1.0	0.7	10.0	5.0	1	A-5000-7806
TM2-1510-S	1.5	1.0	10.0	5.0	1	A-5000-7802
TM2-2010-S	2.0	1.0	10.0	5.0	1	A-5000-7807
TM2-2020-S	2.0	1.0	20.0	15.0	1	A-5000-3603
TM2-2510-S	2.5	1.5	10.25	5.25	1	A-5000-7803
TM2-2520-S	2.5	1.5	20.25	15.25	1	A-5000-7804
TM2-3010-S	3.0	1.5	10.0	5.0	1	A-5000-3604
TM2-3020-S	3.0	1.5	20.0	15.0	1	A-5000-4160
TM2-4010-S	4.0	2.0	10.0	5.0	2	A-5000-4154
TM2-4020-S	4.0	2.0	20.0	15.0	2	A-5000-4161
TM2-5010-S	5.0	2.5	10.0	5.0	2	A-5000-4155
TM2-6010-S	6.0	2.0	10.0	5.0	2	A-5000-4156
TM2-8010-S	8.0	3.0	14.0	---	2	A-5000-4158



RM2-M3



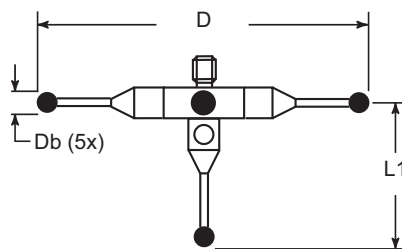
RM2-M4



RM2-M5

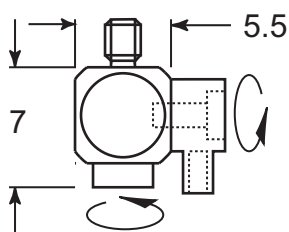
M2 thread adapters

Part No	Male	Female	L	D	Wt
RM2-M3	M2	M3	8.0	4.0	1
RM2-M4	M2	M4	10.0	7.0	2
RM2-M5	M2	M5	10.0	11.0	4



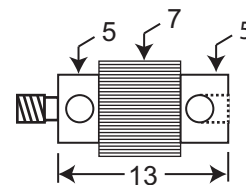
Star probes

Part Number	Db	L1	D	Wt
QM2-2020	2.0	20.0	20.0	3
QM2-2030	2.0	20.0	30.0	4



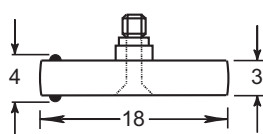
Stylus knuckle

Part Number	Wt
GM2-16	1



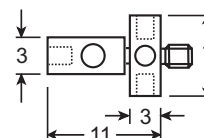
Rotary adapter

Part Number	Wt
RAP-0513	2



Disk probe

Part Number	Wt
DSK-M2-180	1

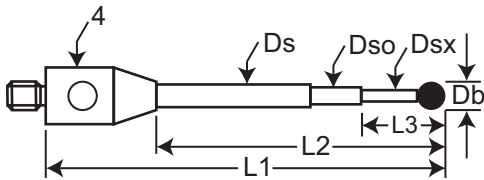


Adjustable star hub

Part Number	Wt
KM2-10	2

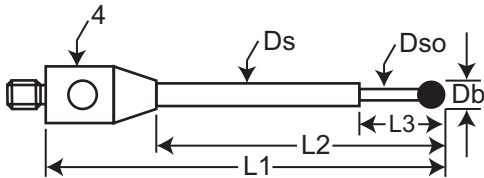
M3 Threads

0.3 mm carbide ball



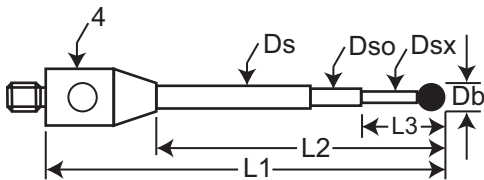
Part Number	Db	Ds	Dso	Dsx	L1	L2	L3	Wt
TM3-0310-C	0.3	1.0	0.5	0.2	10.0	5.0	1.3	<1
TM3-0315-C	0.3	1.0	0.5	0.2	15.0	10.0	1.3	<1
TM3-0318-C	0.3	1.0	0.5	0.2	18.0	13.0	1.3	<1
TM3-0319-C	0.3	1.0	0.5	0.2	19.0	14.0	1.3	<1

0.3 mm ruby ball



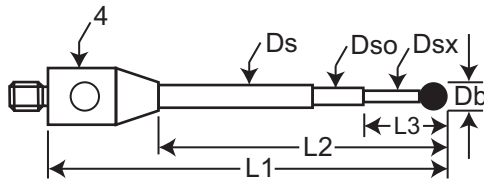
Part Number	Db	Ds	Dso	L1	L2	L3	Wt
TM3-0318-R	0.3	1.0	0.5	18.0	13.0	2.3	<1

0.4 mm carbide ball



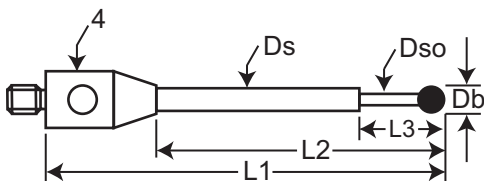
Part Number	Db	Ds	Dso	Dsx	L1	L2	L3	Wt
TM3-0410-C	0.4	1.0	0.5	0.25	10.0	5.0	2.0	<1
TM3-0415-C	0.4	1.0	0.5	0.25	15.0	10.0	2.0	<1
TM3-0418-C	0.4	1.0	0.5	0.25	18.0	13.0	2.0	<1

0.5 mm carbide ball



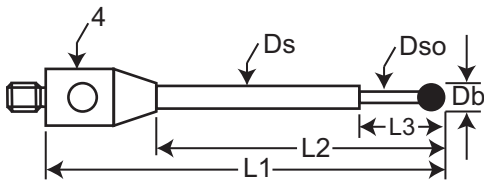
Part Number	Db	Ds	Dso	Dsx	L1	L2	L3	Wt
TM3-0510-C	0.5	1.0	0.6	0.3	10.0	5.0	2.5	<1
TM3-0515-C	0.5	1.0	0.6	0.3	15.0	10.0	2.5	<1
TM3-0518-C	0.5	1.0	0.6	0.3	18.0	13.0	2.5	<1
TM3-0520-C	0.5	1.0	0.6	0.3	20.0	15.0	2.5	<1

0.5 mm ruby ball



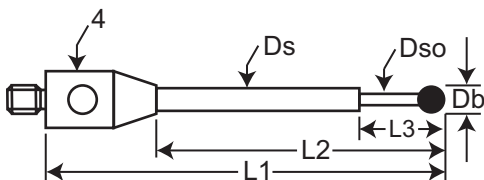
Part Number	Db	Ds	Dso	L1	L2	L3	Wt
TM3-0515-R	0.5	1.0	0.3	15.0	10.0	2.5	<1
TM3-0518-R	0.5	1.0	0.3	18.0	13.0	2.5	<1
TM3-0519-R	0.5	1.0	0.3	19.0	14.0	2.5	<1

0.6 mm carbide ball



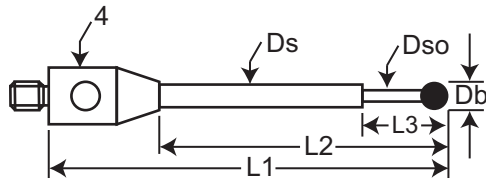
Part Number	Db	Ds	Dso	L1	L2	L3	Wt
TM3-0610-C	0.6	1.0	0.4	10.0	5.0	4.0	<1
TM3-0615-C	0.6	1.0	0.4	15.0	10.0	4.0	<1
TM3-0618-C	0.6	1.0	0.4	18.0	13.0	4.0	<1
TM3-0620-C	0.6	1.0	0.4	20.0	15.0	4.0	<1

0.6 mm ruby ball



Part Number	Db	Ds	Dso	L1	L2	L3	Wt
TM3-0610	0.6	1.0	0.4	10.0	5.0	4.0	<1
TM3-0615	0.6	1.0	0.4	15.0	10.0	4.0	<1
TM3-0618	0.6	1.0	0.4	18.0	13.0	4.0	<1
TM3-0620	0.6	1.0	0.4	20.0	15.0	4.0	<1

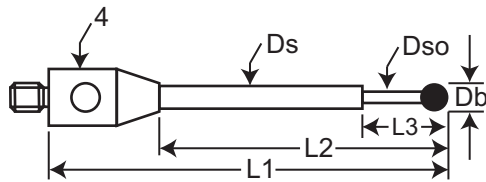
M3 Threads



0.8 mm ruby ball

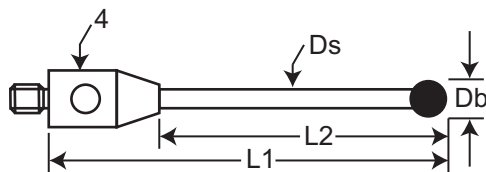
Note: tapered shaft (see page 5) available at same cost. Add "-T" to part number.

Part Number	Db	Ds	Dso	L1	L2	L3	Wt
TM3-0812	0.8	1.0	0.6	12.0	7.0	4.0	<1
TM3-0815	0.8	1.0	0.6	15.0	10.0	4.0	<1
TM3-0820	0.8	1.0	0.6	20.0	15.0	4.0	<1
TM3-0830	0.8	1.0	0.6	30.0	22.0	4.0	<1



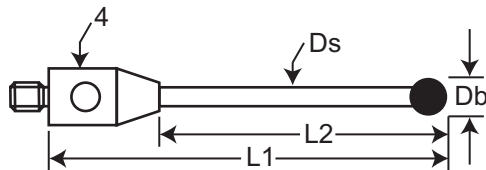
1.0 mm ball, stepped carbide stem

Part Number	Db	Ds	Dso	L1	L2	L3	Wt
TM3-1010	1.0	1.0	0.7	10.0	5.0	5.0	1
TM3-1015	1.0	1.0	0.7	15.0	10.0	5.0	1
TM3-1020	1.0	1.0	0.7	20.0	15.0	5.0	1
TM3-1022	1.0	1.0	0.7	22.0	14.0	5.0	1
TM3-1022-13	1.0	1.0	0.7	22.0	9.0	5.0	1
TM3-1025	1.0	1.0	0.7	25.0	17.0	5.0	1
TM3-1030	1.0	1.0	0.7	30.0	22.0	5.0	1
TM3-1040	1.0	1.5	0.7	40.0	32.0	5.0	1



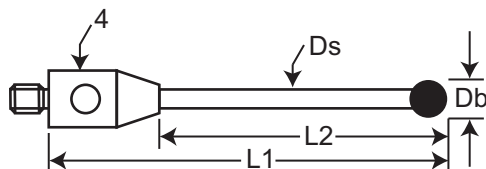
1.0 mm ball

Part Number	Db	Ds	L1	L2	Wt
TM3-1010-DS7	1.0	0.7	10.0	5.0	1
TM3-1020-DS7	1.0	0.7	20.0	15.0	1



1.5 mm ball

Part Number	Db	Ds	L1	L2	Wt
TM3-1520	1.5	1.0	20.0	15.0	1
TM3-1522	1.5	1.0	21.75	16.75	1
TM3-1530-DS1	1.5	1.0	30.0	22.0	1
TM3-1531-DS1	1.5	1.0	30.75	22.75	1

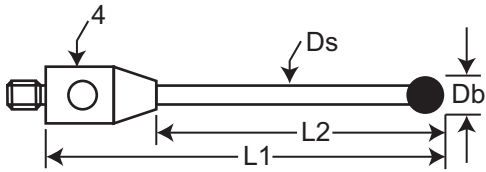


2.0 mm ball

Part Number	Db	Ds	L1	L2	Wt
TM3-2010	2.0	1.0	10.0	5.0	1
TM3-2015	2.0	1.0	15.0	10.0	1
TM3-2019	2.0	1.0	19.0	14.0	1
TM3-2020	2.0	1.0	20.0	15.0	1
TM3-2021	2.0	1.0	21.0	16.0	1
TM3-2022	2.0	1.0	22.0	17.0	1
TM3-2025	2.0	1.0	25.0	18.0	1
TM3-2030	2.0	1.5	30.0	23.0	1
TM3-2031	2.0	1.5	31.0	24.0	1
TM3-2035	2.0	1.5	35.0	28.0	1
TM3-2040	2.0	1.5	40.0	33.0	1
TM3-2050	2.0	1.5	50.0	43.0	1
TM3-2051	2.0	1.5	51.0	44.0	1
TM3-2070	2.0	1.5	70.0	63.0	1
TM3-20100	2.0	1.5	100.0	93.0	1

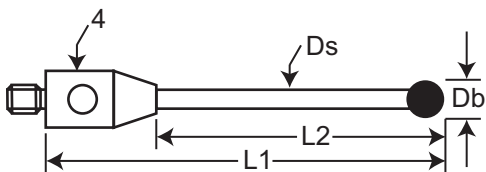
M3 Threads

2.5 mm ball



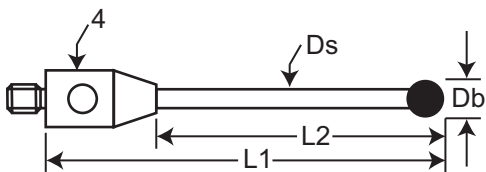
Part Number	Db	Ds	L1	L2	Wt
TM3-2520	2.5	1.5	20.0	15.0	1
TM3-2522	2.5	1.5	22.25	17.3	1
TM3-2530	2.5	1.5	30.0	25.0	1
TM3-2531	2.5	1.5	31.25	24.3	1
TM3-2540	2.5	1.5	40.0	33.0	1
TM3-2541	2.5	1.5	41.25	34.3	1
TM3-2550	2.5	1.5	50.0	43.0	1
TM3-2572	2.5	1.5	72.0	65.0	1

3.0 mm ball



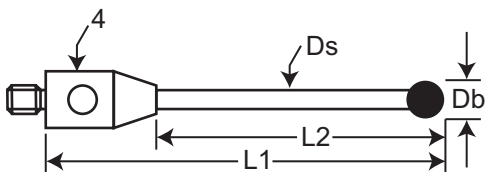
Part Number	Db	Ds	L1	L2	Wt
TM3-3015	3.0	1.5	15.0	10.0	1
TM3-3020	3.0	1.5	20.0	15.0	1
TM3-3025	3.0	1.5	25.0	18.0	2
TM3-3030	3.0	1.5	30.0	23.0	2
TM3-3031	3.0	1.5	31.5	24.5	2
TM3-3035	3.0	1.5	35.0	28.0	2
TM3-3040	3.0	1.5	40.0	33.0	2
TM3-3041	3.0	1.5	41.5	34.5	2
TM3-3050	3.0	2.0	50.0	43.0	2
TM3-3051	3.0	2.0	51.5	44.5	2
TM3-3058	3.0	2.0	58.0	51.0	3
TM3-3060	3.0	2.0	60.0	53.0	3
TM3-3070	3.0	2.0	70.0	63.0	4
TM3-3085	3.0	2.0	85.0	78.0	4
TM3-30100	3.0	2.0	100.0	93.0	5

3.0 mm ball, ceramic stem



Part Number	Db	Ds	L1	L2	Wt
TM3-3051.5-C	3.0	2.0	51.5	44.5	2

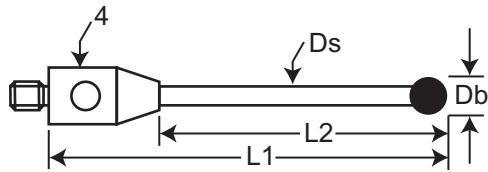
4.0 mm ball



Part Number	Db	Ds	L1	L2	Wt
TM3-4020	4.0	2.0	20.0	15.0	1
TM3-4025	4.0	2.0	25.0	20.0	2
TM3-4030	4.0	2.0	30.0	25.0	2
TM3-4040	4.0	2.0	40.0	35.0	2
TM3-4042	4.0	2.0	42.0	35.0	3
TM3-4050	4.0	2.0	50.0	43.0	4
TM3-4052	4.0	2.0	52.0	45.0	4
TM3-4070	4.0	2.5	70.0	63.0	5
TM3-40100	4.0	2.5	100.0	93.0	6

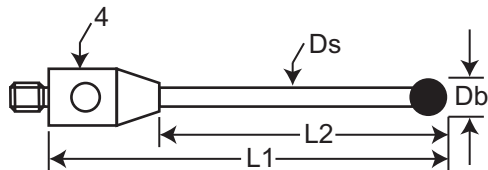
***NOTE: For a silicon nitride ball, add -SN to any part number.**

M3 Threads



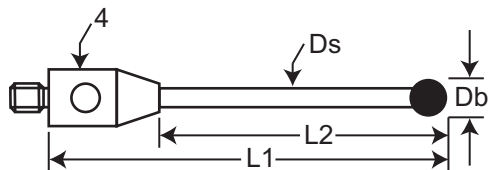
4.0 mm ball, ceramic stem

Part Number	Db	Ds	L1	L2	Wt
TM3-4052-C	4.0	2.0	52.0	45.0	2
TM3-40100-C	4.0	2.5	100.0	93.0	2
TM3-40120-C	4.0	2.5	120.0	113.0	2



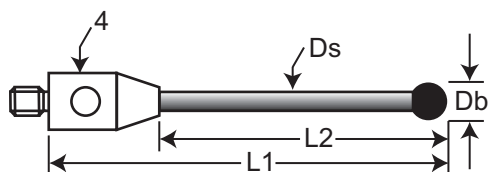
5.0 mm ball

Part Number	Db	Ds	L1	L2	Wt
TM3-5020	5.0	2.5	20.0	13.0	2
TM3-5030	5.0	2.5	30.0	23.0	3
TM3-5040	5.0	2.5	40.0	33.0	4
TM3-5042	5.0	2.5	42.0	35.0	4
TM3-5050	5.0	2.5	50.0	43.0	5
TM3-5052	5.0	2.5	52.0	45.0	5
TM3-5070	5.0	2.5	70.0	63.0	6
TM3-50100	5.0	2.5	100.0	93.0	7



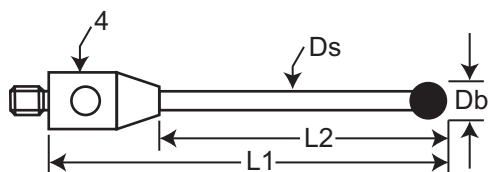
5.0 mm ball, ceramic stem

Part Number	Db	Ds	L1	L2	Wt
TM3-5050-C	5.0	2.5	50.0	44.0	2
TM3-5052-C	5.0	2.5	52.5	45.5	2



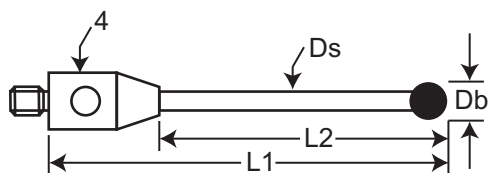
5.0 mm ball, graphite stem

Part Number	Db	Ds	L1	L2	Wt
TM3-5025-G	5.0	2.5	25.0	19.0	2
TM3-5040-G	5.0	2.5	40.0	34.0	2
TM3-5050-G	5.0	2.5	50.0	43.0	2



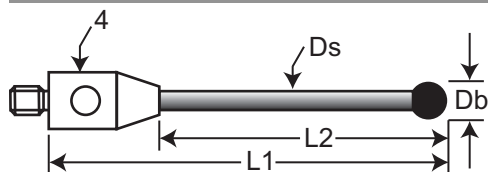
6.0 mm ball

Part Number	Db	Ds	L1	L2	Wt
TM3-6020	6.0	2.5	20.0	13.0	2
TM3-6050	6.0	2.5	50.0	43.0	5
TM3-6060	6.0	2.5	60.0	53.0	6



6.0 mm ball, ceramic stem

Part Number	Db	Ds	L1	L2	Wt
TM3-6075-C	6.0	4.0	75.0	68.0	1
TM3-60100-C	6.0	4.0	100.0	93.0	1

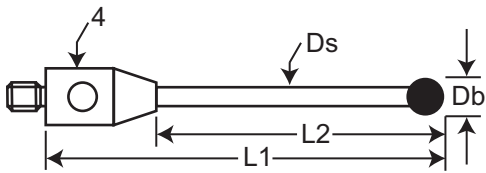


6.0 mm ball, graphite stem

Part Number	Db	Ds	L1	L2	Wt
TM3-6078-G	6.0	4.0	78.0	71.0	1
TM3-60103-G	6.0	4.0	103.0	96.0	1
TM3-60108-G	6.0	4.0	108.0	101.0	1

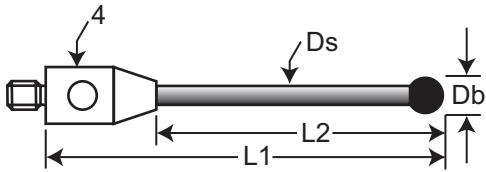
***NOTE: For a silicon nitride ball, add -SN to any part number.**

M3 Threads



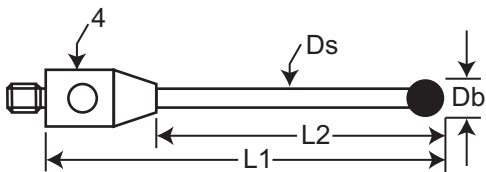
7.0 mm ball

Part Number	Db	Ds	L1	L2	Wt
TM3-7030	7.0	3.0	30.0	8.0	3
TM3-7050	7.0	3.0	50.0	43.0	3



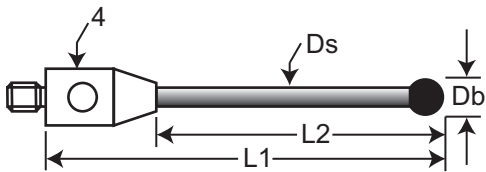
7.0 mm ball, graphite stem

Part Number	Db	Ds	L1	L2	Wt
TM3-7075-G	7.0	3.5	75.0	68.0	3
TM3-70150-G	7.0	3.5	150.0	143.0	3



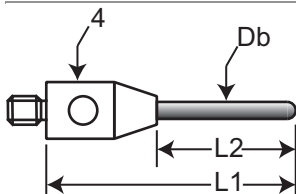
8.0 mm ball

Part Number	Db	Ds	L1	L2	Wt
TM3-8013	8.0	4.0	13.0	8.0	3
TM3-8015	8.0	4.0	15.0	8.0	3
TM3-8020	8.0	4.0	20.0	13.0	4
TM3-8040	8.0	4.0	40.0	33.0	7
TM3-8050	8.0	4.0	50.0	43.0	9



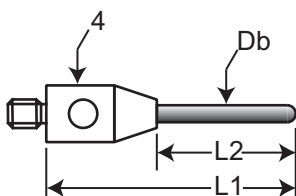
8.0 mm ball, graphite stem

Part Number	Db	Ds	L1	L2	Wt
TM3-8042-G	8.0	4.0	42.0	34.0	2
TM3-8050-G	8.0	4.0	50.0	42.0	3
TM3-8079-G	8.0	4.0	79.0	71.0	3
TM3-80104-G	8.0	4.0	104.0	96.0	3
TM3-80125-G	8.0	4.0	125.0	117.0	4



Cylinder styli, ruby

Part Number	Db	L1	L2	Wt
TM3-1014-B	1.0	14.0	9.0	1
TM3-1514-B	1.5	14.0	9.0	1



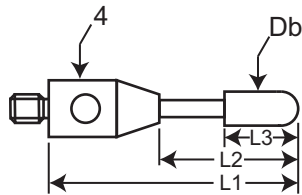
Cylinder styli, carbide

Part Number	Db	L1	L2	Wt
TM3-1014-BC	1.0	14.0	9.0	1
TM3-1032.4-BC	1.0	32.4	25.4	1
TM3-1515-BC	1.0	15.0	10.0	1
TM3-1540-BC	1.0	40.0	33.0	1
TM3-2025-BC	1.5	25.0	20.0	1
TM3-2040-BC	1.5	40.0	33.0	1
TM3-2075-BC	2.0	75.0	68.0	2
TM3-3040-BC	3.0	40.0	33.0	2
TM3-30100-BC	3.0	100.0	93.0	4

***NOTE: For a silicon nitride ball, add -SN to any part number.**

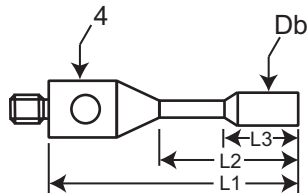
M3 Threads

Cylinder styli, ruby with carbide stem



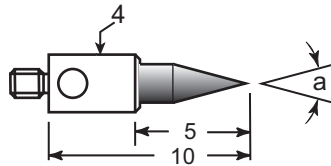
Part Number	Db	L1	L2	L3	Wt
TM3-2020-B	2.0	20.0	15.0	7.2	1
TM3-2030-B	2.0	30.0	25.0	7.2	1
TM3-4020-B	4.0	20.0	15.0	10.0	2
TM3-4030-B	4.0	30.0	23.0	10.0	2
TM3-4040-B	4.0	40.0	33.0	10.0	2

Cylinder styli, stainless steel



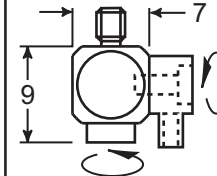
Part Number	Db	L1	L2	L3	Wt
TM3-1511-CYL	1.5	11.0	6.0	4.0	2
TM3-3013-CYL	3.0	13.0	8.0	4.0	2

Pointed styli, carbide



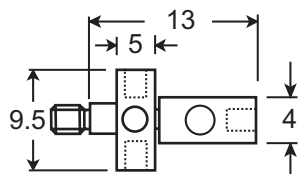
Part Number	Description	Wt
TM3-S30-C	a = 30°	2.0
TM3-S60-C	a = 60°	2.0
TM3-S90-C	a = 90°	2.0

Stylus knuckle



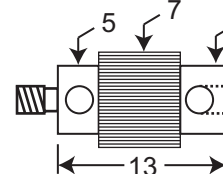
Part Number	Wt
GM3-20	2

Adjustable star hub



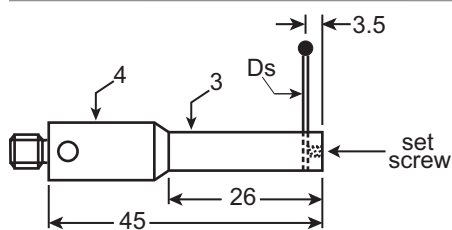
Part Number	Wt
KM3-13	2

Rotary adapter



Part Number	Wt
RAP-0513-M3	2

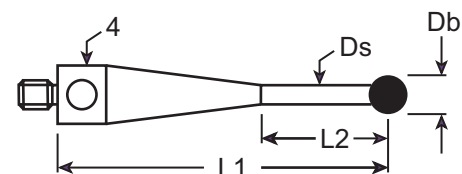
Right angle stylus holder, stainless steel



Part Number	Ds	Wt
PH3-10	1	4
PH3-15	1.5	4

Requires unthreaded stylus as shown on pages 44 - 45.

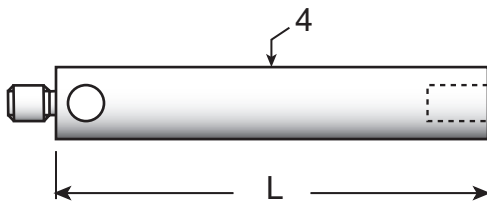
Stainless steel base and stem, one piece, with ruby ball



Part Number	Db	Ds	L1	L2	Wt	Equivalent
TM3-1021-S	1.0	0.7	21.5	5.0	1	A-5000-3551
TM3-2022-S	2.0	1.4	22.0	10.0	1	A-5000-3552
TM3-3022-S	3.0	1.5	22.5	13.0	1	A-5000-3553
TM3-4023-S	4.0	2.5	23.0	14.0	1	A-5000-7606
TM3-5023-S	5.0	2.5	23.5	16.5	1	A-5000-7630
TM3-4033-S	4.0	2.5	33.0	24.0	1	A-5000-3554
TM3-5033-S	5.0	3.5	33.5	26.5	1	A-5000-7648

M3 Threads

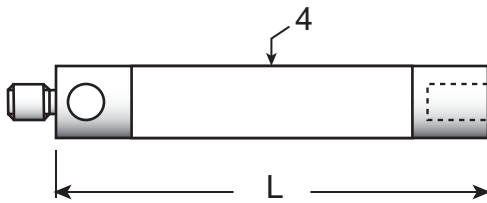
Extensions, stainless steel



Part Number	L	Wt
VM3-10	10	2.0
VM3-15	15	3.0
VM3-20	20	3.0
VM3-25	25	3.0
VM3-30	30	4.0
VM3-35	35	4.0
VM3-40	40	5.0

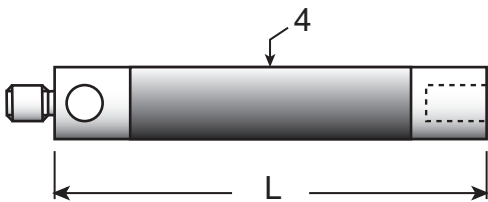
Part Number	L	Wt
VM3-50	50	5.0
VM3-80	80	6.0
VM3-100	100	7.0
VM3-130	130	8.0
VM3-150	150	9.0
VM3-200	200	11.0

Extensions, ceramic, with stainless steel ends

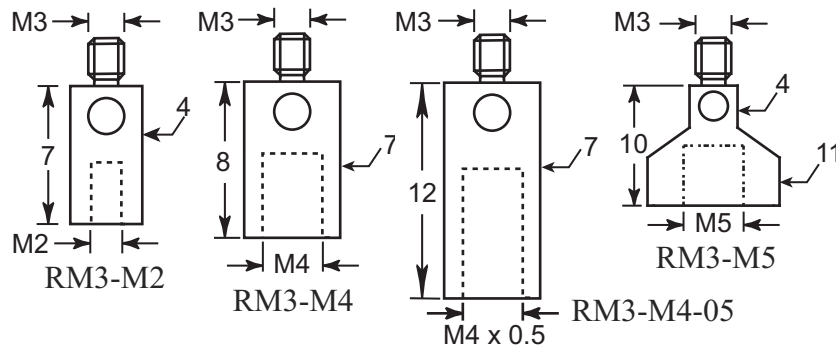


Part Number	L	Wt
VM3-20-C	20	1.0
VM3-30-C	30	1.0
VM3-35-C	35	1.0
VM3-50-C	50	2.0
VM3-100-C	100	2.0

Extensions, graphite, with stainless steel ends

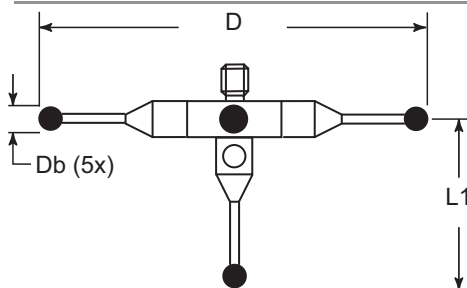


Part Number	L	Wt
VM3-20-G	20	1.0
VM3-30-G	30	1.0
VM3-50-G	50	2.0
VM3-75-G	75	3.0
VM3-100-G	100	3.0



M3 thread adapters

Part No	Male	Female	L	D	Wt
RM3-M2	M3	M2	7.0	4.0	1
RM3-M4	M3	M4 x .7	8.0	7.0	2
RM3-M4-05	M3	M4 x .5	12.0	7.0	2
RM3-M5	M3	M5	10.0	11.0	4

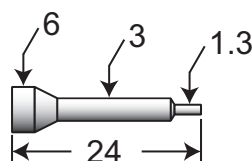


Star probes

Part Number	D	Db	L1
STR3-2030	33.0	2.0	20.0
STR3-2050	55.0	2.0	30.0

Probe key - golf tee style

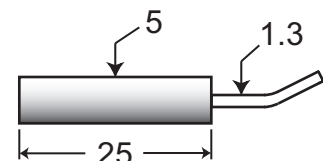
Hardened tool steel.
Fits both M2 and M3 styli.



Part Number
PK2-PK3

Probe key - offset style

Hardened tool steel with
stainless steel handle.

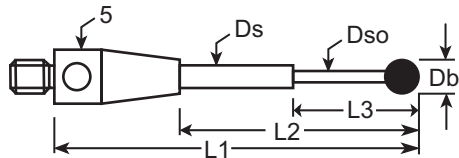


Part Number
PK-3

M3 Threads

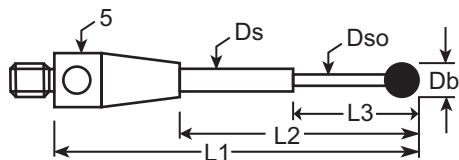
THERM-X™ ULTRA-LIGHT M3 TOOLING

Q-Mark ultra-light M3 tooling is specifically engineered for use on scanning probe heads. They have titanium or aluminum bases, carbide or graphite stems, and ruby or silicon nitride balls. Designed and manufactured in California, USA.



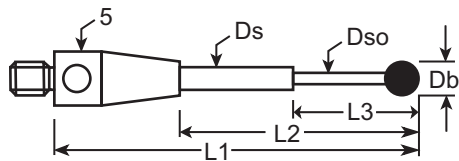
0.3 mm ruby ball, titanium base

Part Number	Db	L1	L2	L3	Ds	Dso	Wt
TM3-0313-TX	0.3	13.0	4.0	2.3	1	0.2	0.6
TM3-0315-TX	0.3	15.0	6.0	2.3	1	0.2	0.6
TM3-0318-TX	0.3	18.0	9.0	2.3	1	0.2	0.7
TM3-0320-TX	0.3	20.0	11.0	2.3	1	0.2	0.7



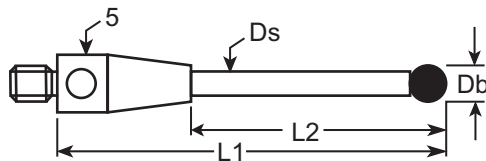
0.5 mm ruby ball, titanium base

Part Number	Db	L1	L2	L3	Ds	Dso	Wt
TM3-0513-TX	0.5	13.0	4.0	2.3	1	0.3	0.6
TM3-0515-TX	0.5	15.0	6.0	2.3	1	0.3	0.6
TM3-0518-TX	0.5	18.0	9.0	2.3	1	0.3	0.6
TM3-0520-TX	0.5	20.0	11.0	2.3	1	0.3	0.7
TM3-0524-TX	0.5	24.0	15.0	2.3	1	0.3	0.7



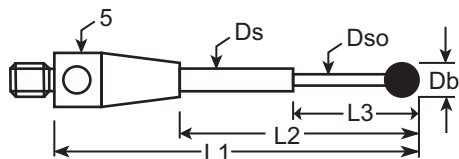
0.6 mm ruby ball, titanium base

Part Number	Db	L1	L2	L3	Ds	Dso	Wt
TM3-0614-TX	0.6	14.0	5.0	4.6	1.0	0.4	0.6
TM3-0617-TX	0.6	17.0	8.0	4.6	1.0	0.4	0.6
TM3-0620-TX	0.6	20.0	11.0	4.6	1.0	0.4	0.7
TM3-0624-TX	0.6	24.0	15.0	4.6	1.0	0.4	0.7



0.8 mm ball, titanium base, straight shaft

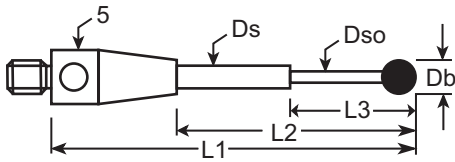
Part Number	Db	L1	L2	Ds	Wt
TM3-0814-TX	0.8	14.0	5.0	0.6	0.6



0.8 mm ball, titanium base, stepped shaft

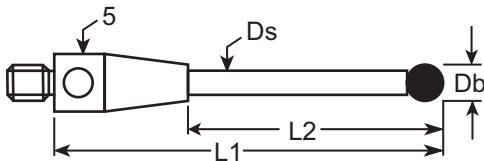
Part Number	Db	L1	L2	L3	Ds	Dso	Wt
TM3-0817-TX	0.8	17.0	8.0	4.8	1.0	0.6	0.6
TM3-0820-TX	0.8	20.0	11.0	4.8	1.0	0.6	0.7
TM3-0825-TX	0.8	25.0	16.0	4.8	1.0	0.6	0.7
TM3-0834-TX	0.8	34.0	25.0	4.8	1.0	0.6	0.8
TM3-0835-TX	0.8	35.0	26.0	4.8	1.0	0.6	0.8

M3 Threads



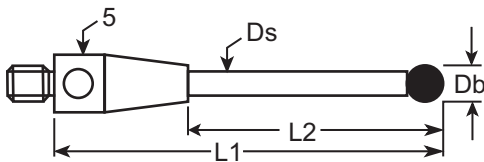
1.0 mm ball, titanium base, stepped shaft

Part Number	Db	L1	L2	L3	Ds	Dso	Wt
TM3-1020-TX-6	1.0	20.0	10.9	5.1	1.0	0.6	0.7
TM3-1020-TX	1.0	20.0	11.0	5.0	1.0	0.8	0.7
TM3-1030-TX	1.0	30.0	21.0	5.0	1.0	0.8	0.8
TM3-1040-TX	1.0	40.0	31.0	5.0	1.0	0.8	1.5



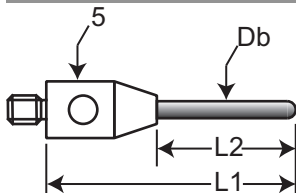
1.0 mm ruby ball, titanium base

Part Number	Db	L1	L2	Ds	Wt
TM3-1014-TX-8	1.0	14.0	5.0	0.8	0.6
TM3-1020-TX-8	1.0	20.0	11.0	0.8	0.6
TM3-1025-TX-8	1.0	25.0	16.0	0.8	0.7
TM3-1031-TX-8	1.0	25.0	16.0	0.8	0.7
TM3-1035-TX-8	1.0	35.0	26.0	0.8	0.8
TM3-1040-TX-8	1.0	40.0	31.0	0.8	0.8



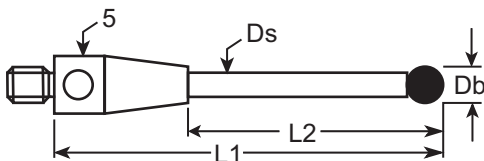
1.0 mm silicon nitride ball, titanium base

Part Number	Db	L1	L2	Ds	Wt
TM3-1014-TX-8-SN	1.0	14.0	5.0	0.8	0.6
TM3-1020-TX-8-SN	1.0	20.0	11.0	0.8	0.6
TM3-1025-TX-8-SN	1.0	25.0	16.0	0.8	0.7
TM3-1031-TX-8-SN	1.0	25.0	16.0	0.8	0.7
TM3-1035-TX-8-SN	1.0	35.0	26.0	0.8	0.8
TM3-1040-TX-8-SN	1.0	40.0	31.0	0.8	0.8



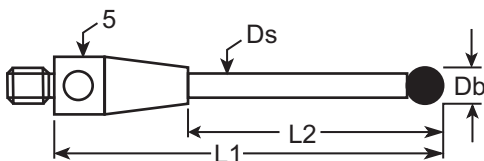
1.0 mm ruby cylinder styli, titanium base

Part Number	Db	L1	L2	Wt
TM3-1016-B-TX	1.0	16.0	7.0	0.6



1.35 mm ruby ball, titanium base

Part Number	Db	L1	L2	Ds	Wt
TM3-1324-TX	1.35	24.0	17.0	1.0	0.7

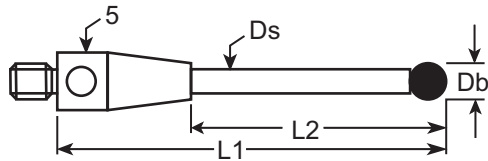


1.5 mm ruby ball, titanium base

Part Number	Db	L1	L2	Ds	Wt
TM3-1514-TX	1.5	14.0	5.0	1.0	0.7
TM3-1517-TX	1.5	17.0	8.0	1.0	0.7
TM3-1520-TX	1.5	20.0	11.0	1.0	0.7
TM3-1525-TX	1.5	25.0	14.0	1.0	0.7
TM3-1530-TX	1.5	30.0	22.5	1.0	0.8
TM3-1530-TX-9	1.5	30.0	21.0	1.0	0.9
TM3-1540-TX	1.5	40.0	31.0	1.0	1.1

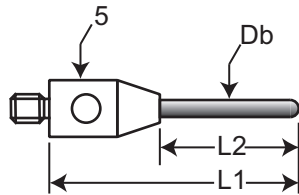
M3 Threads

1.5 mm silicon nitride ball, titanium base



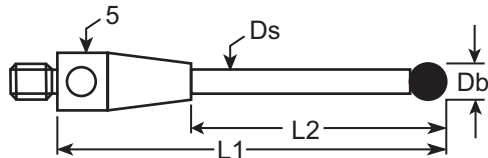
Part Number	Db	L1	L2	Ds	Wt
TM3-1514-TX-SN	1.5	14.0	5.0	1.0	0.7
TM3-1517-TX-SN	1.5	17.0	8.0	1.0	0.7
TM3-1520-TX-SN	1.5	20.0	11.0	1.0	0.7
TM3-1525-TX-SN	1.5	25.0	14.0	1.0	0.7
TM3-1530-TX-SN-9	1.5	30.0	22.5	1.0	0.8
TM3-1530-TX-SN	1.5	30.0	21.0	1.0	0.9
TM3-1540-TX-SN	1.5	40.0	31.0	1.0	1.1

1.5 mm ruby cylinder styli, titanium base



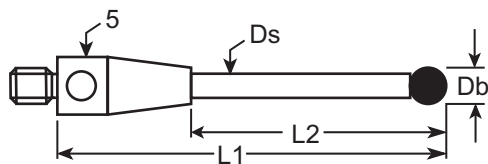
Part Number	Db	L1	L2	Wt
TM3-1516-B-TX	1.5	16.0	7.0	1

2.0 mm ruby ball, titanium base



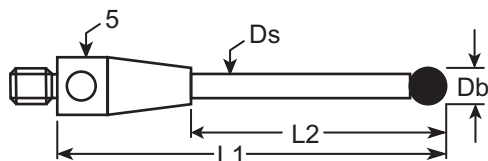
Part Number	Db	L1	L2	Ds	Wt
TM3-2014-TX	2.0	14.0	5.0	1.0	0.6
TM3-2017-TX	2.0	17.0	8.0	1.0	0.6
TM3-2020-TX	2.0	20.0	11.0	1.0	0.7
TM3-2025-TX	2.0	25.0	16.0	1.0	0.7
TM3-2030-TX	2.0	30.0	21.0	1.0	0.8
TM3-2035-TX	2.0	35.0	26.0	1.0	0.8
TM3-2040-TX	2.0	40.0	31.0	1.5	1.7
TM3-2054-TX	2.0	54.0	45.0	1.5	1.9

2.0 mm silicon nitride ball, titanium base

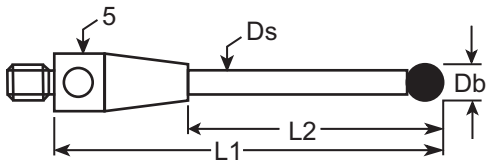


Part Number	Db	L1	L2	Ds	Wt
TM3-2014-TX-SN	2.0	14.0	5.0	1.0	0.6
TM3-2017-TX-SN	2.0	17.0	8.0	1.0	0.6
TM3-2020-TX-SN	2.0	20.0	11.0	1.0	0.7
TM3-2025-TX-SN	2.0	25.0	16.0	1.0	0.7
TM3-2030-TX-SN	2.0	30.0	21.0	1.0	0.8
TM3-2035-TX-SN	2.0	35.0	26.0	1.0	0.8
TM3-2040-TX-SN	2.0	40.0	31.0	1.5	1.7
TM3-2054-TX-SN	2.0	54.0	45.0	1.5	1.9

2.5 mm ruby ball, titanium base

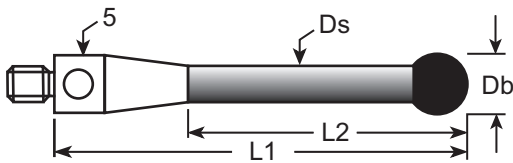


Part Number	Db	L1	L2	Ds	Wt
TM3-2520-TX	2.5	20.0	11.0	1.5	1.0
TM3-2525-TX	2.5	25.0	16.0	1.5	1.3
TM3-2530-TX	2.5	30.0	21.0	1.5	1.5
TM3-2535-TX	2.5	35.0	26.0	1.5	1.8
TM3-2540-TX	2.5	40.0	31.0	1.5	2.0



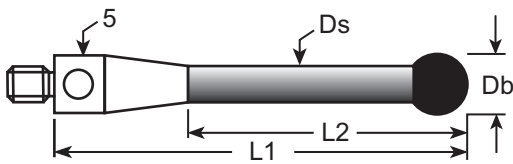
2.5 mm silicon nitride ball, titanium base

Part Number	Db	L1	L2	Ds	Wt
TM3-2520-TX-SN	2.5	20.0	11.0	1.5	1.0
TM3-2525-TX-SN	2.5	25.0	16.0	1.5	1.3
TM3-2530-TX-SN	2.5	30.0	21.0	1.5	1.5
TM3-2535-TX-SN	2.5	35.0	26.0	1.5	1.8
TM3-2540-TX-SN	2.5	40.0	31.0	1.5	2.0



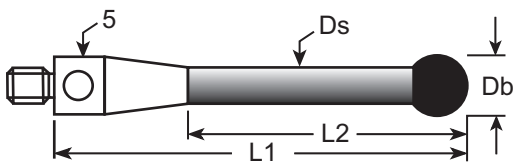
3.0 mm ruby ball, titanium base

Part Number	Db	L1	L2	Ds	Wt
TM3-3025-TX	3.0	25.0	16.0	2.0	0.7
TM3-3033-TX	3.0	33.0	24.0	2.0	0.7
TM3-3040-TX	3.0	40.0	31.0	2.0	0.8
TM3-3042-TX	3.0	42.0	33.0	2.0	0.8
TM3-3050-TX	3.0	50.0	41.0	2.0	0.8
TM3-3058-TX	3.0	58.0	49.0	2.0	1.0
TM3-3065-TX	3.0	65.0	56.0	2.0	1.0
TM3-3075-TX	3.0	75.0	66.0	2.0	1.0
TM3-3084-TX	3.0	84.0	75.0	2.0	1.0
TM3-30100-TX	3.0	100.0	91.0	2.0	1.0
TM3-30125-TX	3.0	125.0	116.0	2.0	1.0



3.0 mm silicon nitride ball, titanium base

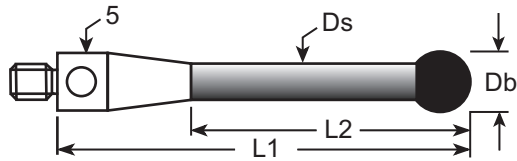
Part Number	Db	L1	L2	Ds	Wt
TM3-3025-TX-SN	3.0	25.0	16.0	2.0	0.7
TM3-3040-TX-SN	3.0	25.0	16.0	2.0	0.7
TM3-3042-TX-SN	3.0	25.0	16.0	2.0	0.7
TM3-3058-TX-SN	3.0	25.0	16.0	2.0	0.7
TM3-3065-TX-SN	3.0	25.0	16.0	2.0	0.7
TM3-3075-TX-SN	3.0	25.0	16.0	2.0	0.7
TM3-3084-TX-SN	3.0	25.0	16.0	2.0	0.7
TM3-30100-TX-SN	3.0	25.0	16.0	2.0	0.7
TM3-30125-TX-SN	3.0	25.0	16.0	2.0	0.7



4.0 mm ruby ball, titanium base

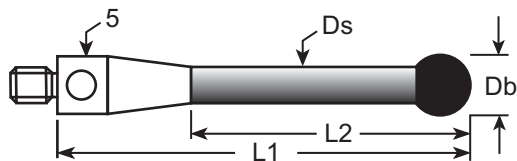
Part Number	Db	L1	L2	Ds	Wt
TM3-4025-TX	4.0	25.0	16.0	2.0	1.0
TM3-4050-TX	4.0	50.0	41.0	2.0	1.0
TM3-4052-TX	4.0	52.0	43.0	2.5	1.1
TM3-4075-TX	4.0	75.0	66.0	2.5	1.2
TM3-4090-TX	4.0	90.0	81.0	3.0	1.3

M3 Threads



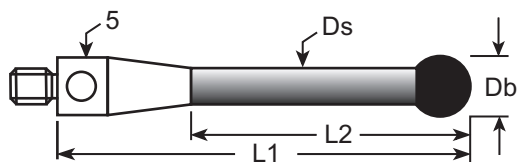
4.0 mm silicon nitride ball, titanium base

Part Number	Db	L1	L2	Ds	Wt
TM3-4025-TX-SN	4.0	25.0	16.0	2.0	1.0
TM3-4050-TX-SN	4.0	50.0	41.0	2.0	1.0
TM3-4052-TX-SN	4.0	52.0	43.0	2.5	1.1
TM3-4075-TX-SN	4.0	75.0	66.0	2.5	1.2
TM3-4090-TX-SN	4.0	90.0	81.0	3.0	1.3



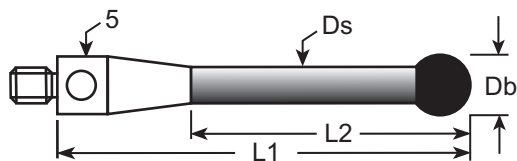
5.0 mm ruby ball, titanium base

Part Number	Db	L1	L2	Ds	Wt
TM3-5030-TX	5.0	30.0	21.0	3.5	1.1
TM3-5040-TX	5.0	40.0	50.0	3.5	1.2
TM3-5050-TX	5.0	50.0	41.0	3.5	1.4
TM3-5060-TX	5.0	60.0	51.0	3.5	1.5
TM3-5075-TX	5.0	75.0	66.0	3.5	1.8
TM3-50100-TX	5.0	100.0	91.0	3.5	2.0



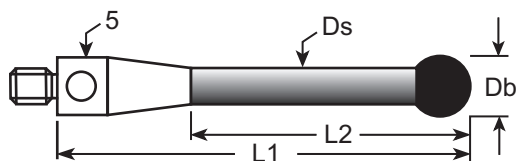
5.0 mm silicon nitride ball, titanium base

Part Number	Db	L1	L2	Ds	Wt
TM3-5030-TX-SN	5.0	30.0	21.0	3.5	1.1
TM3-5040-TX-SN	5.0	40.0	50.0	3.5	1.2
TM3-5050-TX-SN	5.0	50.0	41.0	3.5	1.4
TM3-5060-TX-SN	5.0	60.0	51.0	3.5	1.5
TM3-5075-TX-SN	5.0	75.0	66.0	3.5	1.8
TM3-50100-TX-SN	5.0	100.0	91.0	3.5	2.0



6.0 mm ruby ball, titanium base

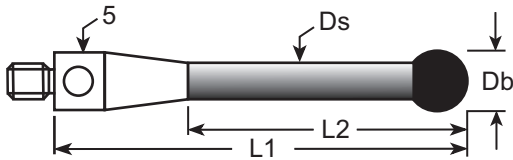
Part Number	Db	L1	L2	Ds	Wt
TM3-6050-TX	6.0	50.0	41.0	3.5	1.5
TM3-6070-TX	6.0	70.0	50.0	3.5	1.8
TM3-60100-TX	6.0	100.0	91.0	3.5	2.0
TM3-60103-TX	6.0	103.0	94.0	3.5	2.0



6.0 mm silicon nitride ball, titanium base

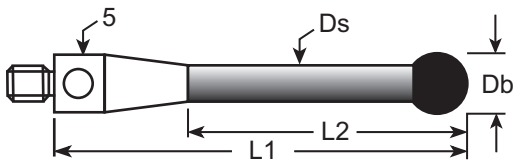
Part Number	Db	L1	L2	Ds	Wt
TM3-6050-TX-SN	6.0	50.0	41.0	3.5	1.5
TM3-6070-TX-SN	6.0	70.0	50.0	3.5	1.8
TM3-60100-TX-SN	6.0	100.0	91.0	3.5	2.0
TM3-60103-TX-SN	6.0	103.0	94.0	3.5	2.0

M3 Threads



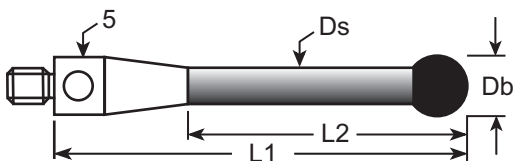
8.0 mm ruby ball, titanium base

Part Number	Db	L1	L2	Ds	Wt
TM3-8030-TX	8.0	30.0	21.0	5.0	1.9
TM3-8050-TX	8.0	50.0	41.0	5.0	2.1
TM3-8070-TX	8.0	70.0	61.0	5.0	2.6
TM3-80100-TX	8.0	100.0	91.0	5.0	2.7
TM3-80125-TX	8.0	125.0	116.0	5.0	2.9



8.0 mm silicon nitride ball, titanium base

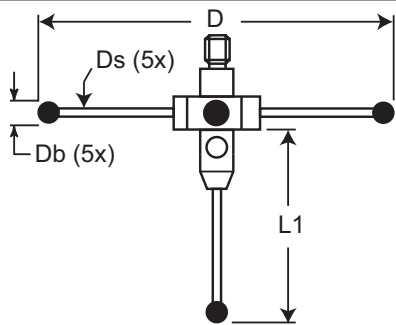
Part Number	Db	L1	L2	Ds	Wt
TM3-8030-TX-SN	8.0	30.0	21.0	5.0	1.9
TM3-8050-TX-SN	8.0	50.0	41.0	5.0	2.1
TM3-8070-TX-SN	8.0	70.0	61.0	5.0	2.6
TM3-80100-TX-SN	8.0	100.0	91.0	5.0	2.7
TM3-80125-TX-SN	8.0	125.0	116.0	5.0	2.9



M3 "red dot" reference stylus

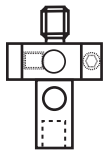
5.0 mm ball, graphite stem, titanium base

Part Number	Db	L1	L2	Ds	Wt
TM3-RDMP-30	5.0	30.0	21.0	3.5	1.1
TM3-RDMP-50	5.0	50.0	41.0	3.5	1.4



Ultra-light star probe, titanium hub, with 5 ruby styli

Part Number	D	Db	Ds	L1	Wt
STR3-1060-TX	60.0	1.0	0.7	25.4	3
STR3-1560-TX	60.0	1.5	1.0	25.4	4
STR3-3040-TX	40.0	3.0	1.5	25.4	5



Ultra-light titanium hub with set screws

Part Number	Ds	Wt
STR3-HUB-0.7	0.7	2
STR3-HUB-1	1.0	3
STR3-HUB-1.5	1.5	4

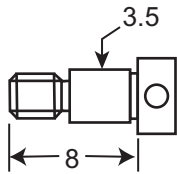
Requires unthreaded styli as shown on pages 43-44.



Extensions, graphite, with titanium ends

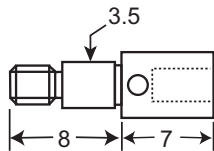
Part Number	L	Wt	Part Number	L	Wt
VM3-20-TX	20	1.2	VM3-65-TX	65	1.7
VM3-25-TX	25	1.3	VM3-75-TX	75	1.8
VM3-30-TX	30	1.3	VM3-80-TX	80	2.0
VM3-35-TX	35	1.4	VM3-100-TX	100	2.0
VM3-40-TX	40	1.4	VM3-130-TX	130	2.5
VM3-50-TX	50	1.5	VM3-150-TX	150	2.7
VM3-60-TX	60	1.7			

M3 Threads



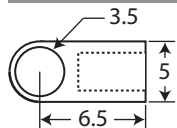
Titanium clamping screw

Part Number	Wt
XXT-CS	0.49



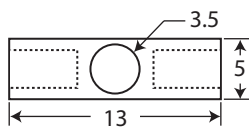
Titanium clamping screw with ID thread

Part Number	Wt
XXT-M3-CS	0.65



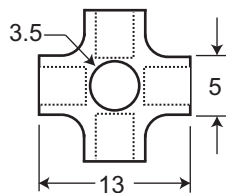
Titanium single cube, 90 degree

Part Number	Wt
XXT-90	0.57



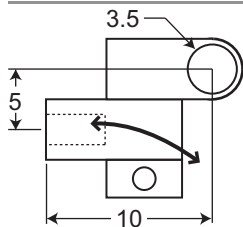
Titanium double cube, 180 degree

Part Number	Wt
XXT-180	0.90



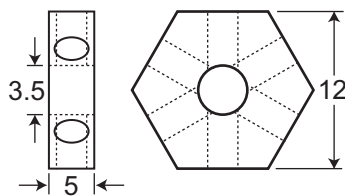
Titanium star cube

Part Number	Wt
XXT-WM3-13	1.65



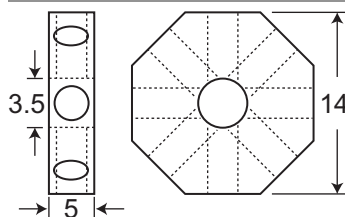
Titanium knuckle joint

Part Number	Wt
XXT-JM3	1.60



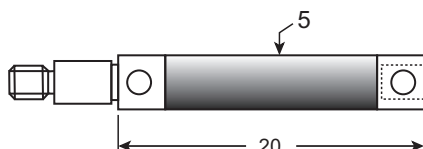
Titanium 6-sided hub

Part Number	Wt
XXT-HUB-6	1.82



Titanium 8-sided hub

Part Number	Wt
XXT-HUB-8	2.31

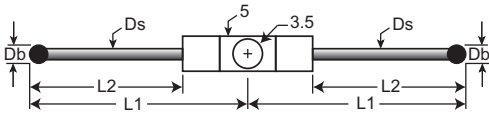


Clamping extension, graphite, titanium ends

Part Number	Wt
VM3C-20-TX	1.34

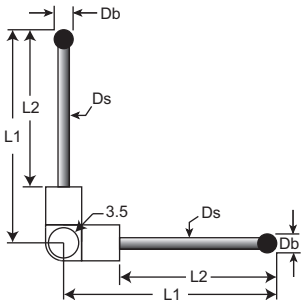
M3 Threads

Double-ended stylus, graphite, titanium



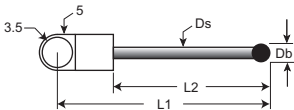
Part Number	Db	Ds	L1	L2	Wt
XXT-3020-180	3.0	2.0	20.0	11.0	1.4
XXT-3030-180	3.0	2.0	30.00	21.00	1.5
XXT-3040-180	3.0	2.0	40.0	31.0	1.6

Right angle double-ended stylus, graphite, titanium



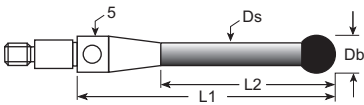
Part Number	Db	Ds	L1	L2	Wt
XXT-3020-90	3.0	2.0	20.0	11.0	1.4
XXT-3030-90	3.0	2.0	30.00	21.00	1.5
XXT-3040-90	3.0	2.0	40.0	31.0	1.6

Single-ended stylus, graphite, titanium



Part Number	Db	Ds	L1	L2	Wt
XXT-3020-L	3.0	2.0	20.0	11.0	0.8
XXT-3030-L	3.0	2.0	30.0	21.0	0.9
XXT-3040-L	3.0	2.0	40.0	31.0	1.0

Clamping stylus, graphite, titanium



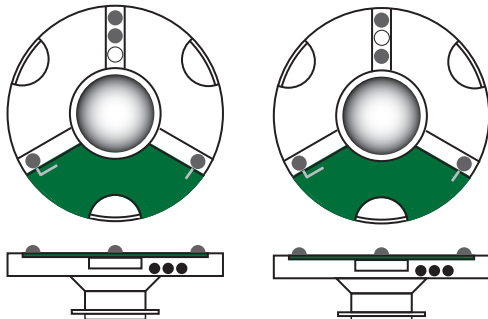
Part Number	Db	Ds	L1	L2	Wt
TM3-3020-TX-CS	3.0	2.0	20.0	11.0	0.7
TM3-3030-TX-CS	3.0	2.0	30.0	21.0	0.8
TM3-3040-TX-CS	3.0	2.0	40.0	31.0	0.8

3 position probe change magazine for TL1 and TL3 sensors



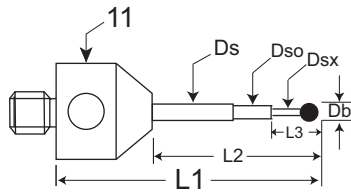
Part Number
 PS-XXT

TL1 and TL3 sensor adapter plates with ID chip



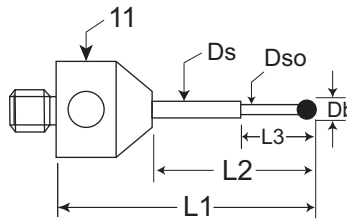
Part Number
 XXT-AP-ID
 XXT-AP-ID3

M5 Threads



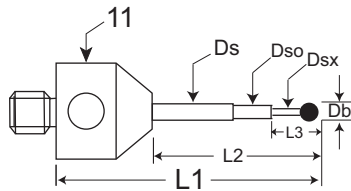
0.3 mm carbide ball

Part Number	Db	Ds	Dso	Dsx	L1	L2	L3	Wt
AFG-0320-C	0.3	1.0	0.5	0.2	20.0	10.0	1.3	6
AFG-0320-L-C	0.3	1.0	0.5	0.2	20.0	10.0	1.3	3
AFG-0325-C	0.3	1.0	0.5	0.2	25.0	15.0	1.3	6



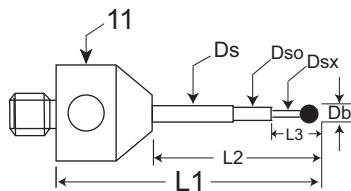
0.3 mm ruby ball

Part Number	Db	Ds	Dso	L1	L2	L3	Wt
AFG-0318-R	0.3	1.0	0.2	18.0	8.0	2.3	6
AFG-0320-L-R	0.3	1.0	0.2	20.0	10.0	2.3	3
AFG-0320-R	0.3	1.0	0.2	20.0	10.0	2.3	6
AFG-0323-R	0.3	1.0	0.2	23.0	13.0	2.3	6



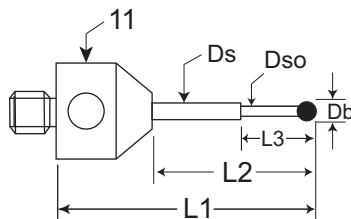
0.4 mm carbide ball

Part Number	Db	Ds	Dso	Dsx	L1	L2	L3	Wt
AFG-0420-C	0.4	1.0	0.5	0.25	20.0	10.0	2.0	6
AFG-0425-C	0.4	1.0	0.5	0.25	25.0	15.0	2.0	6



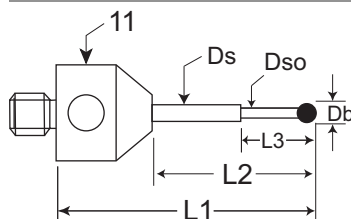
0.5 mm carbide ball

Part Number	Db	Ds	Dso	Dsx	L1	L2	L3	Wt
AFG-0515-C	0.5	1.0	0.6	0.3	15.0	5.0	2.5	6
AFG-0520-C	0.5	1.0	0.6	0.3	20.0	10.0	2.5	6
AFG-0520-L-C	0.5	1.0	0.6	0.3	20.0	10.0	2.5	3
AFG-0525-C	0.5	1.0	0.6	0.3	25.0	15.0	2.5	6
AFG-0530-C	0.5	1.0	0.6	0.3	30.0	20.0	2.5	3
AFG-0540-C	0.5	1.0	0.6	0.3	40.0	30.0	2.5	6



0.5 mm ruby ball

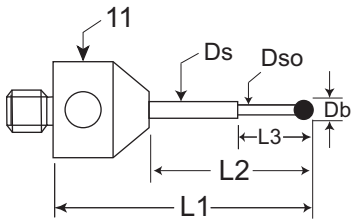
Part Number	Db	Ds	Dso	L1	L2	L3	Wt
AFG-0515-R	0.5	1.0	0.3	15.0	5.0	2.5	6
AFG-0520-R	0.5	1.0	0.3	20.0	10.0	2.5	6
AFG-0520-L-R	0.5	1.0	0.3	20.0	10.0	2.5	3
AFG-0525-R	0.5	1.0	0.3	25.0	15.0	2.5	6
AFG-0530-R	0.5	1.0	0.3	30.0	20.0	2.5	6
AFG-0540-R	0.5	1.0	0.3	40.0	30.0	2.5	6
AFG-0550-R	0.5	1.0	0.3	50.0	40.0	2.5	6
AFG-0555-R	0.5	1.0	0.3	55.0	45.0	2.5	6



0.6 mm carbide ball

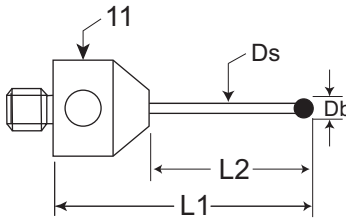
Part Number	Db	Ds	Dso	L1	L2	L3	Wt
AFG-0620-C	0.6	1.0	0.4	20.0	10.0	4.0	6
AFG-0625-C	0.6	1.0	0.4	25.0	15.0	4.0	6
AFG-0630-C	0.6	1.0	0.4	30.0	20.0	4.0	3

M5 Threads



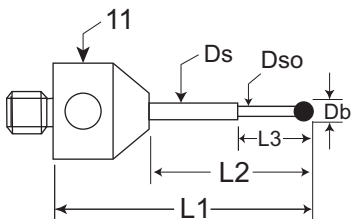
0.6 mm ruby ball

Part Number	Db	Ds	Dso	L1	L2	L3	Wt
AFG-0620	0.6	1.0	0.4	20.0	10.0	4.0	6
AFG-0620-L	0.6	1.0	0.4	20.0	10.0	4.0	3
AFG-0625	0.6	1.0	0.4	25.0	15.0	4.0	6
AFG-0625-L	0.6	1.0	0.4	25.0	15.0	4.0	3
AFG-0640	0.6	1.0	0.4	40.0	30.0	4.0	6



0.7 mm ruby ball

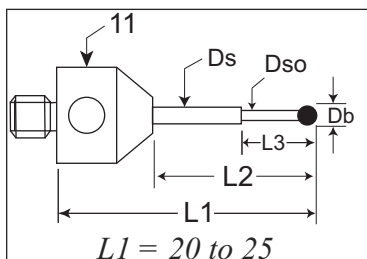
Part Number	Db	Ds	L1	L2	Wt
AFG-0720	0.7	0.5	20.0	10.0	6
AFG-0730	0.7	0.5	30.0	20.0	6



0.8 mm ruby ball

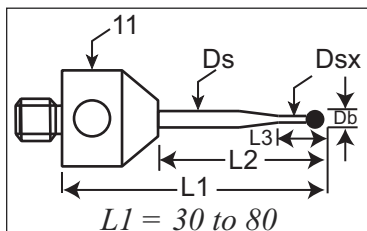
Note: tapered shaft (see page 5) available at same cost. Add "-T" to part number.

Part Number	Db	Ds	Dso	L1	L2	L3	Wt
AFG-0820	0.8	1.0	0.6	20.0	10.0	4.0	6
AFG-0820-L	0.8	1.0	0.6	20.0	10.0	4.0	3
AFG-0825	0.8	1.0	0.6	25.0	15.0	4.0	6
AFG-0830	0.8	1.0	0.6	30.0	20.0	4.0	6
AFG-0840	0.8	1.0	0.6	40.0	30.0	4.0	6



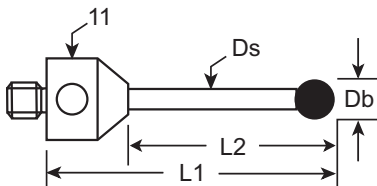
1.0 mm ball, stepped or tapered shaft

Part Number	Db	Ds	Dso	L1	L2	L3	Wt
AFG-1020	1.0	1.0	0.7	20.0	10.0	5.0	6
AFG-1020-L	1.0	1.0	0.7	20.0	10.0	5.0	3
AFG-1025	1.0	1.0	0.7	25.0	15.0	5.0	6
AFG-1025-L	1.0	1.0	0.7	25.0	15.0	5.0	3
AFG-1030	1.0	1.5	0.7	30.0	20.0	5.0	6
AFG-1030-L	1.0	1.5	0.7	30.0	20.0	5.0	3
AFG-1035-L	1.0	1.5	0.7	35.0	25.0	5.0	3
AFG-1040	1.0	1.5	0.7	40.0	30.0	5.0	6
AFG-1058	1.0	1.5	0.7	58.0	48.0	5.0	6
AFG-1060-L	1.0	1.5	0.7	60.0	50.0	5.0	3
AFG-1080	1.0	1.5	0.7	80.0	70.0	5.0	6



1.0 mm ball, straight shaft

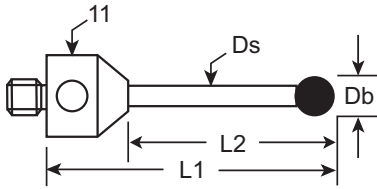
Part Number	Db	Ds	L1	L2	Wt
AFG-1020-DS7	1.0	0.7	20.0	10.0	6
AFG-1025-DS7	1.0	0.7	25.0	15.0	6
AFG-1030-DS7	1.0	0.7	30.0	20.0	6
AFG-1040-DS7	1.0	0.7	40.0	30.0	6



***NOTE: For a silicon nitride ball, add -SN to any part number.**

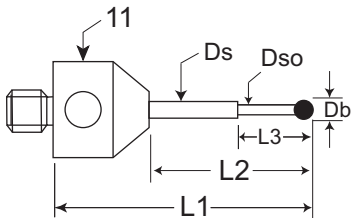
M5 Threads

1.35 mm ball



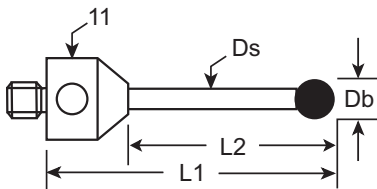
Part Number	Db	Ds	L1	L2	Wt
AFG-1320	1.35	1.0	20.0	10.0	6
AFG-1320-L	1.35	1.0	20.0	10.0	3
AFG-1325	1.35	1.0	25.0	15.0	6
AFG-1325-L	1.35	1.0	25.0	15.0	3
AFG-1330	1.35	1.0	30.0	20.0	6
AFG-1333	1.35	1.0	33.0	23.0	6
AFG-1335	1.35	1.0	35.0	25.0	6
AFG-1340	1.35	1.0	40.0	30.0	6

1.5 mm ball, stepped shaft



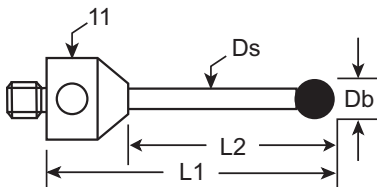
Part Number	Db	Ds	Dso	L1	L2	L3	Wt
AFG-1530	1.5	1.5	1.0	30.0	20.0	8.0	6
AFG-1530-L	1.5	1.5	1.0	30.0	20.0	8.0	3
AFG-1535	1.5	1.5	1.0	35.0	25.0	8.0	6
AFG-1540	1.5	1.5	1.0	40.0	30.0	8.0	6
AFG-1545	1.5	1.5	1.0	45.0	35.0	8.0	6
AFG-1545-L	1.5	1.5	1.0	45.0	35.0	8.0	3
AFG-1548	1.5	1.5	1.0	48.0	38.0	8.0	6
AFG-1550	1.5	1.5	1.0	50.0	40.0	8.0	6

1.5 mm ball, straight shaft



Part Number	Db	Ds	L1	L2	Wt
AFG-1515	1.5	1.0	15.0	5.0	6
AFG-1515-L	1.5	1.0	15.0	5.0	3
AFG-1520	1.5	1.0	20.0	10.0	6
AFG-1520-DS7	1.5	0.7	20.0	10.0	6
AFG-1520-L	1.5	1.0	20.0	10.0	3
AFG-1525	1.5	1.0	25.0	15.0	6
AFG-1525-L	1.5	1.0	25.0	15.0	3
AFG-1530-DS1	1.5	1.0	30.0	20.0	6
AFG-1533-DS1	1.5	1.0	33.0	23.0	6
AFG-1535-DS1	1.5	1.0	35.0	25.0	6
AFG-1540-DS1	1.5	1.0	40.0	30.0	6
AFG-1545-DS1	1.5	1.0	45.0	35.0	6

2.0 mm ball



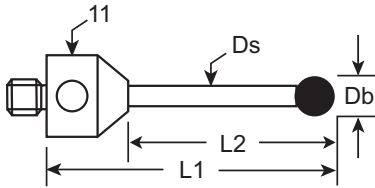
Part Number	Db	Ds	L1	L2	Wt
AFG-2020	2.0	1.0	20.0	10.0	6
AFG-2020-L	2.0	1.0	20.0	10.0	3
AFG-2025	2.0	1.0	25.0	15.0	6
AFG-2025-L	2.0	1.0	25.0	15.0	3

continued on next page

***NOTE: For a silicon nitride ball, add -SN to any part number.**

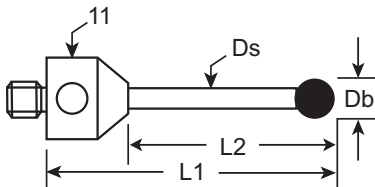
M5 Threads

2.0 mm ball *continued from previous page*



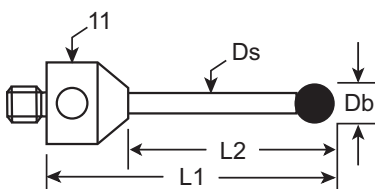
Part Number	Db	Ds	L1	L2	Wt
AFG-2030	2.0	1.5	30.0	20.0	7
AFG-2030-L	2.0	1.5	30.0	20.0	3
AFG-2033.5	2.0	1.5	33.5	23.5	7
AFG-2035	2.0	1.5	35.0	25.0	7
AFG-2035-L	2.0	1.5	35.0	25.0	3
AFG-2040	2.0	1.5	40.0	30.0	7
AFG-2040-L	2.0	1.5	40.0	30.0	3
AFG-2045	2.0	1.5	45.0	35.0	7
AFG-2050	2.0	1.5	50.0	40.0	7
AFG-2060	2.0	1.5	60.0	50.0	8
AFG-2080	2.0	1.5	80.0	70.0	8
AFG-20100	2.0	1.5	100.0	90.0	9

2.5 mm ball



Part Number	Db	Ds	L1	L2	Wt
AFG-2520	2.5	1.5	20.0	10.0	7
AFG-2520-L	2.5	1.5	20.0	10.0	3
AFG-2525	2.5	1.5	25.0	15.0	7
AFG-2525-L	2.5	1.5	25.0	15.0	3
AFG-2530	2.5	1.5	30.0	20.0	7
AFG-2530-L	2.5	1.5	30.0	20.0	3
AFG-2535	2.5	1.5	35.0	25.0	7
AFG-2535-L	2.5	1.5	35.0	25.0	3
AFG-2540	2.5	1.5	40.0	30.0	7
AFG-2540-L	2.5	1.5	40.0	30.0	3
AFG-2550	2.5	1.5	50.0	40.0	7
AFG-2565	2.5	1.5	65.0	55.0	7
AFG-2575	2.5	1.5	75.0	65.0	7

3.0 mm ball



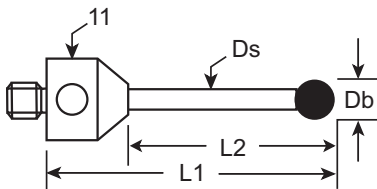
Part Number	Db	Ds	L1	L2	Wt
ATG-3015	3.0	1.5	15.0	5.0	7
ATG-3020	3.0	1.5	20.0	10.0	7
ATG-3020-L	3.0	1.5	20.0	10.0	3
ATG-3025	3.0	1.5	25.0	15.0	7
ATG-3025-L	3.0	1.5	25.0	15.0	3
ATG-3030	3.0	2.0	30.0	20.0	7
ATG-3030-L	3.0	2.0	30.0	20.0	4
ATG-3033	3.0	2.0	33.0	23.0	7
ATG-3033-L	3.0	2.0	33.0	23.0	4
ATG-3035	3.0	2.0	35.0	25.0	7
ATG-3040	3.0	2.0	40.0	30.0	8
ATG-3045	3.0	2.0	45.0	35.0	8

continued on next page

***NOTE: For a silicon nitride ball, add -SN to any part number.**

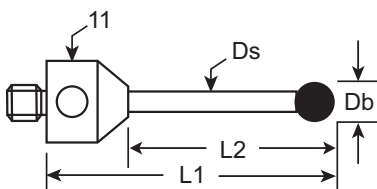
M5 Threads

3.0 mm ball *continued from previous page*



Part Number	Db	Ds	L1	L2	Wt
ATG-3050	3.0	2.0	50.0	40.0	8
ATG-3050-L	3.0	2.0	50.0	40.0	5
ATG-3058	3.0	2.0	58.0	48.0	8
ATG-3058-L	3.0	2.0	58.0	48.0	5
ATG-3060	3.0	2.0	60.0	50.0	8
ATG-3063	3.0	2.0	63.0	53.0	8
ATG-3065	3.0	2.0	65.0	55.0	8
ATG-3065-L	3.0	2.0	65.0	55.0	5
ATG-3070	3.0	2.0	70.0	60.0	9
ATG-3075	3.0	2.0	75.0	65.0	9
ATG-3080	3.0	2.0	80.0	70.0	9
ATG-3080-L	3.0	2.0	80.0	70.0	6
ATG-3085	3.0	2.0	85.0	75.0	9
ATG-3090	3.0	2.0	90.0	80.0	9
ATG-30100	3.0	2.0	100.0	90.0	10
ATG-30110	3.0	2.0	110.0	100.0	11
ATG-30118	3.0	2.0	118.0	108.0	12
ATG-30120	3.0	2.0	120.0	110.0	12

3.5 mm ball

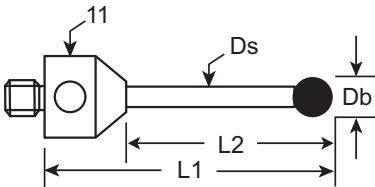


Part Number	Db	Ds	L1	L2	Wt
ATG-3518	3.5	2.5	18.0	8.0	8
ATG-3530	3.5	2.5	30.0	20.0	8
ATG-3533	3.5	2.5	33.0	23.0	8
ATG-3533-DS2	3.5	2.0	33.0	23.0	8
ATG-3535	3.5	2.5	35.0	25.0	8
ATG-3545	3.5	2.5	45.0	35.0	8
ATG-3550	3.5	2.5	50.0	40.0	9
ATG-3555	3.5	2.5	55.0	45.0	9
ATG-3558	3.5	2.5	58.0	48.0	9
ATG-3560	3.5	2.5	60.0	50.0	10
ATG-3575	3.5	2.5	75.0	65.0	10
ATG-3575-L	3.5	2.5	75.0	65.0	6
ATG-3580	3.5	2.5	80.0	70.0	10
ATG-3585	3.5	2.5	85.0	75.0	10
ATG-3590	3.5	2.5	90.0	80.0	10
ATG-3595	3.5	2.5	95.0	85.0	11
ATG-35100	3.5	2.5	100.0	90.0	12

***NOTE: For a silicon nitride ball, add -SN to any part number.**

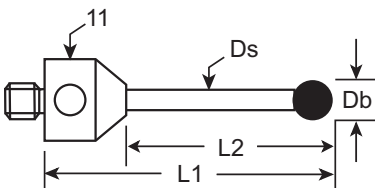
M5 Threads

4.0 mm ball



Part Number	Db	Ds	L1	L2	Wt
ATG-4025	4.0	2.0	25.0	15.0	7
ATG-4030	4.0	2.0	30.0	20.0	7
ATG-4033	4.0	2.0	33.0	23.0	7
ATG-4035	4.0	2.0	35.0	25.0	7
ATG-4040	4.0	2.0	40.0	30.0	7
ATG-4040-L	4.0	2.0	40.0	30.0	4
ATG-4050	4.0	2.5	50.0	40.0	9
ATG-4055	4.0	2.5	55.0	45.0	9
ATG-4058	4.0	2.5	58.0	48.0	9
ATG-4060	4.0	2.5	60.0	50.0	10
ATG-4064	4.0	2.5	64.0	54.0	11
ATG-4070	4.0	2.5	70.0	60.0	11
ATG-4075	4.0	2.5	75.0	65.0	11
ATG-4080	4.0	2.5	80.0	70.0	11
ATG-4085	4.0	2.5	85.0	75.0	12
ATG-4090	4.0	2.5	90.0	80.0	12
ATG-4095	4.0	2.5	95.0	85.0	13
ATG-40100	4.0	2.5	100.0	90.0	13
ATG-40110	4.0	2.5	110.0	100.0	14
ATG-40110-L	4.0	2.5	110.0	100.0	11
ATG-40120	4.0	2.5	120.0	110.0	15
ATG-40135	4.0	3.0	135.0	125.0	17
ATG-40150	4.0	3.0	150.0	135.0	22

5.0 mm ball

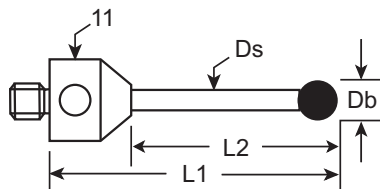


Part Number	Db	Ds	L1	L2	Wt
ATG-5015	5.0	2.5	15.0	5.0	8
ATG-5020	5.0	2.5	20.0	10.0	8
ATG-5030	5.0	2.5	30.0	20.0	9
ATG-5030-L	5.0	2.5	30.0	20.0	6
ATG-5033	5.0	2.5	33.0	23.0	9
ATG-5035	5.0	2.5	35.0	25.0	9
ATG-5040	5.0	2.5	40.0	30.0	10
ATG-5045	5.0	3.5	45.0	35.0	11
ATG-5050	5.0	3.5	50.0	40.0	12
ATG-5053	5.0	3.5	53.0	43.0	12
ATG-5058	5.0	3.5	58.0	48.0	12
ATG-5060	5.0	3.5	60.0	50.0	13
ATG-5063	5.0	3.5	63.0	53.0	13
ATG-5063-C	5.0	3.5	63.0	53.0	6
ATG-5065	5.0	3.5	65.0	55.0	14

continued on next page

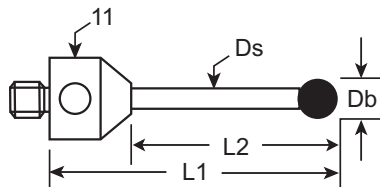
***NOTE: For a silicon nitride ball, add -SN to any part number.**

M5 Threads



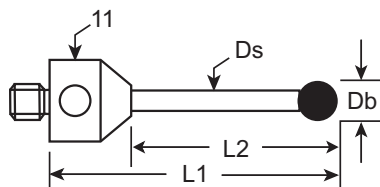
5.0 mm ball *continued from previous page*

Part Number	Db	Ds	L1	L2	Wt
ATG-5070	5.0	3.5	70.0	60.0	15
ATG-5075	5.0	3.5	75.0	65.0	16
ATG-5075-L	5.0	3.5	75.0	65.0	9
ATG-5080	5.0	3.5	80.0	70.0	17
ATG-5085	5.0	3.5	85.0	75.0	18
ATG-5090	5.0	3.5	90.0	80.0	19
ATG-50100	5.0	3.5	100.0	90.0	20
ATG-50100-C	5.0	3.5	100.0	90.0	10
ATG-50105	5.0	3.5	105.0	95.0	21
ATG-50114	5.0	3.5	114.0	104.0	22
ATG-50120	5.0	3.5	120.0	110.0	23
ATG-50125	5.0	3.5	125.0	115.0	23
ATG-50130	5.0	3.5	130.0	115.0	24
ATG-50135	5.0	3.5	135.0	120.0	26
ATG-50140	5.0	3.5	140.0	125.0	27
ATG-50140-L	5.0	3.5	140.0	125.0	19



5.5 mm ball

Part Number	Db	Ds	L1	L2	Wt
ATG-5533	5.5	3.5	33.0	23.0	12
ATG-5550	5.5	3.5	50.0	40.0	13
ATG-5550-DS2	5.5	2.0	50.0	40.0	8
ATG-5575-DS2	5.5	2.0	75.0	65.0	10
ATG-55100	5.5	3.5	100.0	90.0	20
ATG-55120	5.5	3.5	120.0	110.0	23
ATG-55125	5.5	3.5	125.0	110.0	24
ATG-55140	5.5	3.5	140.0	125.0	27



6.0 mm ball

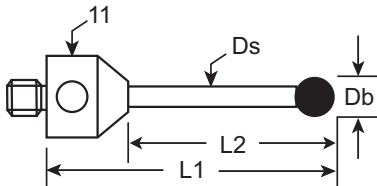
Part Number	Db	Ds	L1	L2	Wt
ATG-6025	6.0	2.0	25.0	15.0	9
ATG-6033	6.0	3.5	33.0	23.0	10
ATG-6033-DS2	6.0	2.0	33.0	23.0	9
ATG-6040	6.0	3.5	40.0	30.0	11
ATG-6045	6.0	3.5	45.0	35.0	12
ATG-6050-C	6.0	3.5	50.0	40.0	5
ATG-6050-G	6.0	4.0	50.0	40.0	5
ATG-6053	6.0	3.5	53.0	43.0	12
ATG-6055	6.0	3.5	55.0	45.0	13
ATG-6060	6.0	3.5	60.0	50.0	14
ATG-6064	6.0	3.5	64.0	54.0	14
ATG-6065	6.0	3.5	65.0	55.0	14
ATG-6065-C	6.0	3.5	65.0	55.0	5
ATG-6070	6.0	3.5	70.0	60.0	15

continued on next page

***NOTE: For a silicon nitride ball, add -SN to any part number.**

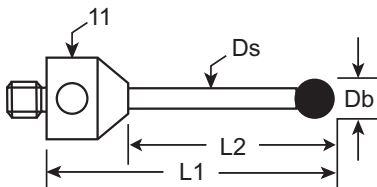
M5 Threads

6.0 mm ball *continued from previous page*



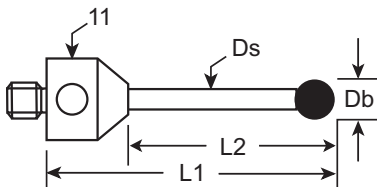
Part Number	Db	Ds	L1	L2	Wt
ATG-6075	6.0	3.5	75.0	65.0	15
ATG-6075-C	6.0	3.5	75.0	65.0	7
ATG-60100	6.0	3.5	100.0	90.0	20
ATG-60100-C	6.0	3.5	100.0	90.0	8
ATG-60110	6.0	3.5	110.0	100.0	22
ATG-60125	6.0	3.5	125.0	115.0	25
ATG-60150	6.0	3.5	150.0	135.0	28
ATG-60170-C	6.0	3.5	170.0	155.0	15

7.0 mm ball



Part Number	Db	Ds	L1	L2	Wt
ATG-7053	7.0	3.5	53.0	43.0	12
ATG-7055	7.0	3.5	55.0	45.0	12
ATG-7055-C	7.0	3.5	55.0	45.0	5
ATG-7075	7.0	3.5	75.0	65.0	14
ATG-7075-C	7.0	3.5	75.0	65.0	5
ATG-70125	7.0	3.5	125.0	115.0	24
ATG-70130	7.0	3.5	130.0	120.0	25

8.0 mm ball



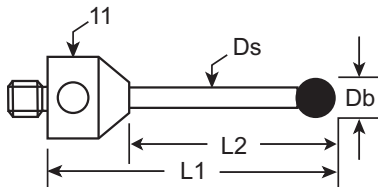
Part Number	Db	Ds	L1	L2	Wt
ATG-8025	8.0	5.0	25.0	15.0	18
ATG-8025-C	8.0	5.0	25.0	15.0	6
ATG-8030	8.0	5.0	30.0	20.0	20
ATG-8040	8.0	5.0	40.0	30.0	22
ATG-8050	8.0	5.0	50.0	40.0	22
ATG-8050-C	8.0	5.0	50.0	40.0	8
ATG-8053-C	8.0	5.0	53.0	43.0	8
ATG-8060	8.0	5.0	60.0	50.0	23
ATG-8063	8.0	5.0	63.0	51.0	23
ATG-8063-C	8.0	5.0	63.0	51.0	8
ATG-8063.5	8.0	6.0	63.5	51.5	23
ATG-8064	8.0	5.0	64.0	52.0	23
ATG-8075	8.0	5.0	75.0	63.0	24
ATG-8080	8.0	5.0	80.0	68.0	25
ATG-8085-C	8.0	5.0	85.0	73.0	8
ATG-8090	8.0	5.0	90.0	78.0	29
ATG-80100	8.0	5.0	100.0	88.0	33
ATG-80100-C	8.0	5.0	100.0	88.0	9
ATG-80114	8.0	5.0	114.0	102.0	37
ATG-80114-C	8.0	5.0	114.0	102.0	12
ATG-80114.5	8.0	6.0	114.5	102.5	38
ATG-80120	8.0	5.0	120.0	108.0	38

continued on next page

***NOTE: For a silicon nitride ball, add -SN to any part number.**

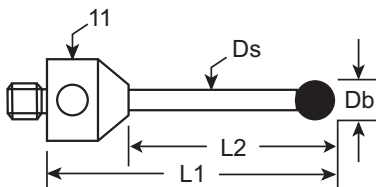
M5 Threads

8.0 mm ball *continued from previous page*



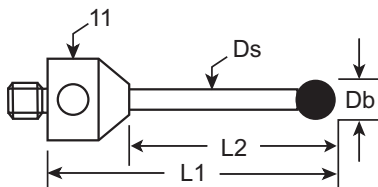
Part Number	Db	Ds	L1	L2	Wt
ATG-80125	8.0	5.0	125.0	113.0	40
ATG-80130	8.0	5.0	130.0	118.0	41
ATG-80135	8.0	5.0	135.0	123.0	43
ATG-80135-C	8.0	5.0	135.0	123.0	14
ATG-80140	8.0	5.0	140.0	128.0	44
ATG-80145	8.0	5.0	145.0	133.0	45
ATG-80150	8.0	5.0	150.0	138.0	46
ATG-80155	8.0	5.0	155.0	143.0	47
ATG-80160	8.0	6.0	160.0	148.0	60
ATG-80160-C	8.0	6.0	160.0	148.0	22
ATG-80175	8.0	6.0	175.0	163.0	70
ATG-80175-C	8.0	6.0	175.0	163.0	23
ATG-80180	8.0	6.0	180.0	168.0	72
ATG-80190	8.0	6.0	190.0	178.0	75
ATG-80200	8.0	6.0	200.0	188.0	79
ATG-80200-C	8.0	6.0	200.0	188.0	25
ATG-80240	8.0	6.0	240.0	228.0	90
ATG-80265	8.0	6.0	265.0	253.0	98
ATG-80345	8.0	6.0	345.0	333.0	109

9.0 mm ball



Part Number	Db	Ds	L1	L2	Wt
ATG-9060-C	9.0	5.0	60.0	50.0	9
ATG-9065	9.0	5.0	65.0	55.0	42
ATG-9065-C	9.0	5.0	65.0	55.0	9
ATG-9075	9.0	3.5	75.0	65.0	28
ATG-90110-C	9.0	5.0	110.0	98.0	12
ATG-90150	9.0	5.0	150.0	138.0	55
ATG-90165	9.0	5.0	165.0	153.0	63
ATG-90180-C	9.0	6.0	180.0	168.0	18

10.0 mm ball



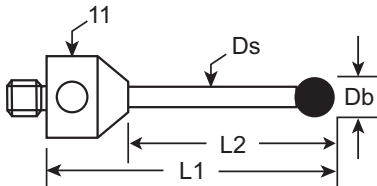
Part Number	Db	Ds	L1	L2	Wt
ATG-10060	10.0	6.0	60.0	48.0	44
ATG-10063	10.0	6.0	63.0	51.0	44
ATG-10065	10.0	6.0	65.0	53.0	44
ATG-10080-C	10.0	6.0	80.0	68.0	11
ATG-100118	10.0	6.0	118.0	106.0	51
ATG-100118-C	10.0	6.0	118.0	106.0	12
ATG-100135	10.0	6.0	135.0	123.0	60
ATG-100140	10.0	6.0	140.0	128.0	62
ATG-100145	10.0	6.0	145.0	133.0	64
ATG-100150	10.0	6.0	150.0	138.0	66

continued on next page

***NOTE: For a silicon nitride ball, add -SN to any part number.**

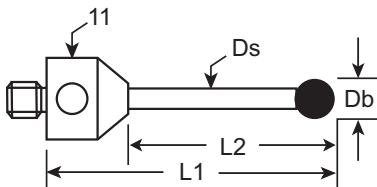
M5 Threads

10.0 mm ball *continued from previous page*



Part Number	Db	Ds	L1	L2	Wt
ATG-100160	10.0	6.0	160.0	145.0	70
ATG-100165	10.0	6.0	165.0	150.0	72
ATG-100170	10.0	6.0	170.0	155.0	74
ATG-100175	10.0	6.0	175.0	160.0	76
ATG-100175-C	10.0	6.0	175.0	160.0	26
ATG-100185	10.0	6.0	185.0	170.0	80
ATG-100190	10.0	6.0	190.0	175.0	82
ATG-100190-C	10.0	6.0	190.0	175.0	26
ATG-100200	10.0	6.0	200.0	185.0	86
ATG-100210	10.0	6.0	210.0	195.0	88
ATG-100250-C	10.0	6.0	250.0	235.0	31

12.0 mm ball

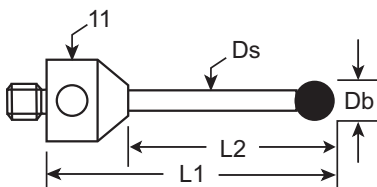


Part Number	Db	Ds	L1	L2	Wt
ATG-12040	12.0	5.0	40.0	28.0	38
ATG-12050	12.0	5.0	50.0	38.0	42
ATG-12060	12.0	5.0	60.0	48.0	45
ATG-12065	12.0	5.0	65.0	53.0	45
ATG-12075	12.0	5.0	75.0	63.0	47
ATG-12090	12.0	6.0	90.0	78.0	55
ATG-120118	12.0	6.0	118.0	106.0	60
ATG-120145	12.0	6.0	145.0	132.0	62
ATG-120160	12.0	6.0	160.0	147.0	63
ATG-120185	12.0	6.0	185.0	162.0	65
ATG-120190	12.0	6.0	190.0	167.0	68
ATG-120195	12.0	6.0	195.0	172.0	70
ATG-120200	12.0	6.0	200.0	177.0	72
ATG-120210	12.0	6.0	210.0	187.0	75

12.7 mm ball

Grade 25 ceramic balls

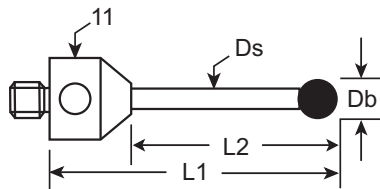
Grade 5 silicon nitride (SN) balls



Part Number	Db	Ds	L1	L2	Wt
ATG-12725	12.7	5.0	25.0	15.0	38
ATG-12730	12.7	5.0	30.0	18.0	40
ATG-12733	12.7	5.0	33.0	21.0	41
ATG-12740	12.7	5.0	40.0	28.0	42
ATG-12750	12.7	5.0	50.0	38.0	44
ATG-12765	12.7	5.0	65.0	53.0	47
ATG-12775	12.7	5.0	75.0	63.0	50
ATG-12785	12.7	5.0	85.0	73.0	52
ATG-127100	12.7	5.0	100.0	88.0	55
ATG-127110	12.7	5.0	110.0	98.0	57
ATG-127114	12.7	5.0	114.0	102.0	60
ATG-127130	12.7	6.0	130.0	118.0	66
ATG-127155	12.7	6.0	155.0	143.0	74
ATG-127190	12.7	6.0	190.0	178.0	79

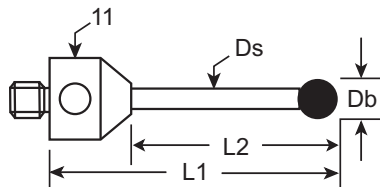
***NOTE: For a silicon nitride ball, add -SN to any part number.**

M5 Threads



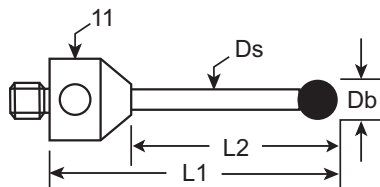
13.0 mm ball Grade 25 ceramic balls

Part Number	Db	Ds	L1	L2	Wt
ATG-130100	13.0	5.0	100.0	88.0	38
ATG-130114	13.0	6.0	114.0	91.0	42
ATG-130185	13.0	6.0	185.0	162.0	45



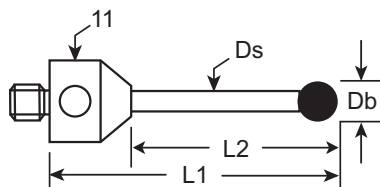
15.0 mm ball Grade 25 ceramic balls

Part Number	Db	Ds	L1	L2	Wt
ATG-15030	15.0	5.0	30.0	20.0	32
ATG-15045	15.0	5.0	45.0	35.0	38
ATG-15050	15.0	5.0	50.0	38.0	40
ATG-15060	15.0	6.0	60.0	48.0	52
ATG-15065	15.0	5.0	65.0	53.0	44
ATG-15075	15.0	5.0	75.0	63.0	58
ATG-15095	15.0	5.0	95.0	83.0	68
ATG-150100	15.0	5.0	100.0	88.0	70
ATG-150100-C	15.0	5.0	100.0	88.0	22
ATG-150114	15.0	5.0	114.0	99.0	65
ATG-150140	15.0	5.0	140.0	125.0	70
ATG-150155	15.0	6.0	155.0	140.0	80
ATG-150190	15.0	5.0	190.0	175.0	80
ATG-150255	15.0	6.0	255.0	240.0	105



19.0 mm ball Grade 25 ceramic balls

Part Number	Db	Ds	L1	L2	Wt
ATG-19040	19.05	5.0	40.0	30.0	50
ATG-19050	19.05	5.0	50.0	40.0	52
ATG-19080	19.05	5.0	80.0	68.0	68

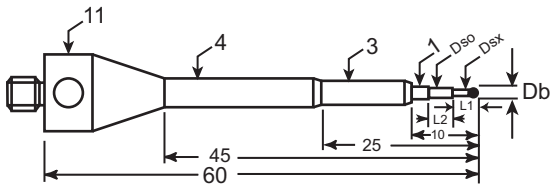


25.0 mm ball Grade 25 ceramic balls

Part Number	Db	Ds	L1	L2	Wt
ATG-25052	25.0	6.0	52.0	42.0	53
ATG-250100	25.0	6.0	100.0	88.0	65

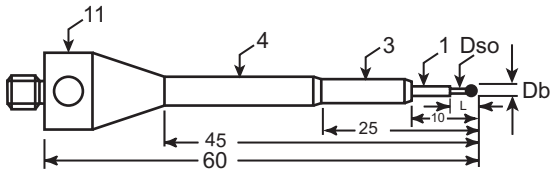
***NOTE: For a silicon nitride ball, add -SN to any part number.**

M5 Threads



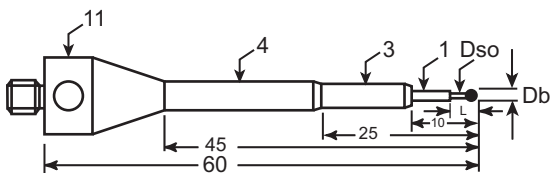
0.3 and 0.5 mm carbide ball

Part Number	Db	L1	L2	Dso	Dsx	Wt
ASG-0360-C	0.3	1.3	3.2	0.5	0.2	12
ASG-0560-C	0.5	2.5	2.5	0.6	0.3	12



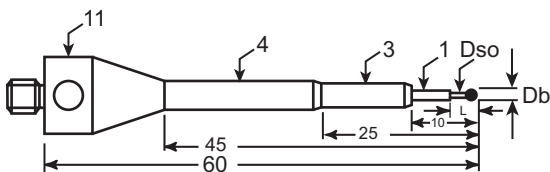
0.3 and 0.5 mm ruby ball

Part Number	Db	L	Dso	Wt
ASG-0360-R	0.3	2.3	0.2	12
ASG-0560-R	0.5	2.5	0.3	12



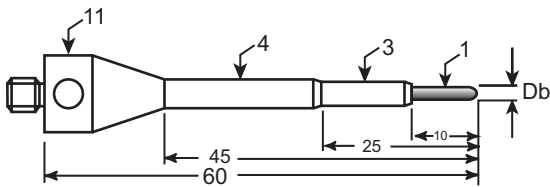
0.6 and 0.8 mm ball **Note: tapered shaft (p.5) available at same cost. Add "-T" to part number.*

Part Number	Db	L	Dso	Wt
ASG-0660	0.6	4.0	0.4	12
ASG-0860*	0.8	4.0	0.6	12



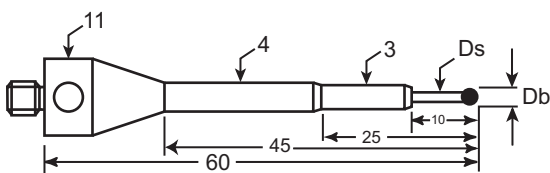
1.0 mm ball

Part Number	Db	L	Dso	Wt
ASG-1060	1.0	5	0.7	12



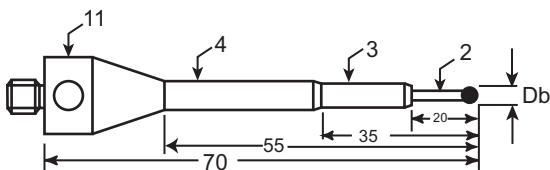
1.0 mm carbide spherical radius tip

Part Number	Db	Wt
ASG-1060-BC	1.0	12



1.35 to 3.5 mm ball

Part Number	Db	Ds	Wt
ASG-1360	1.35	1.0	12
ASG-1560	1.5	1.0	12
ASG-2060	2.0	1.0	12
ASG-2560	2.5	1.0	12
ASG-3060	3.0	1.5	12
ASG-3560	3.0	1.5	12



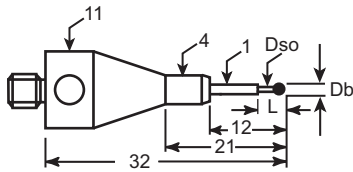
5.0 mm ball

Part Number	Db	Wt
ASG-5070	5.0	13

***NOTE: For a silicon nitride ball, add -SN to any part number.**

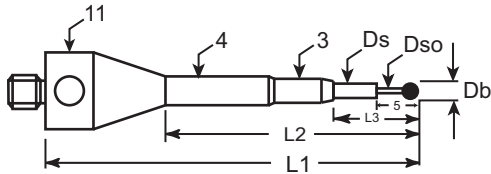
M5 Threads

0.3 to 1.0 mm ball



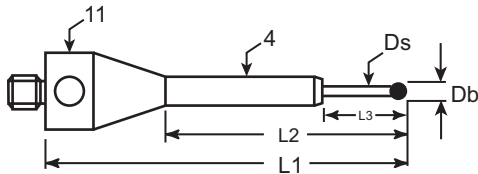
Part Number	Db	L	Dso	Wt
AQG-0332	0.3	2.3	0.2	7
AQG-0532	0.5	2.5	0.3	7
AQG-0632	0.6	4.0	0.4	7
AQG-0832	0.8	4.0	0.6	7
AQG-1032	1.0	5.0	0.7	7

1.0 mm ball



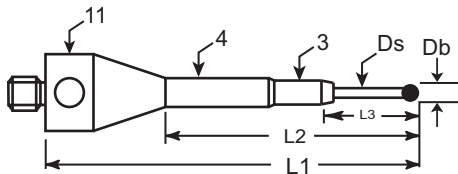
Part Number	Db	L1	L2	L3	Dso	Wt
ARG-1045	1.0	45	20	5	0.7	11
ASG-1045	1.0	45	30	10	0.7	11
ASG-1055	1.0	45	40	20	0.7	11

1.35 to 2.5 mm ball



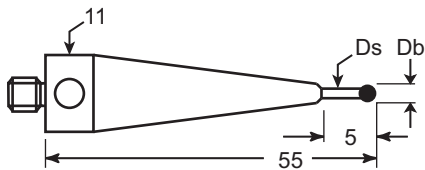
Part Number	Db	L1	L2	L3	Ds	Wt
AQG-1432	1.35	32	22	12	1.0	9
ARG-1442	1.35	42	32	10	1.0	9
ARG-1444	1.35	44	34	20	1.0	9
AQG-1532	1.5	32	22	10	1.0	9
ARG-1544	1.5	44	34	20	1.0	9
ARG-2033	2.0	33	23	8	1.5	9
ARG-2044	2.0	44	34	19	1.5	9
ARG-2050	2.0	50	40	25	1.5	9
ARG-2058	2.0	58	48	33	1.5	9
AQG-2532	2.5	32	22	12	1.5	9

1.5 to 2.5 mm ball



Part Number	Db	L1	L2	L3	Ds	Wt
ASG-1545	1.5	45	30	10	1.0	11
ASG-1555	1.5	55	40	20	1.0	11
ARG-2544	2.5	44	34	19	1.5	9
ARG-2558	2.5	58	48	33	1.5	10

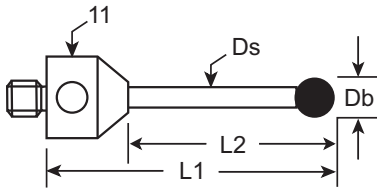
Fine styli



Part Number	Db	Ds	L	Wt
ACR-0555	0.5	0.4	5	11
ACR-1055	1.0	0.7	5	11
ACR-1555	1.5	1.0	5	11
ACR-2055	2.0	1.5	5	11
ACR-2555	2.5	1.5	5	11
ACR-3055	3.0	1.5	5	11
ACR-3555	3.5	2.5	10	11
ACR-4055	4.0	2.5	10	11
ACR-6055	6.0	2.5	10	11

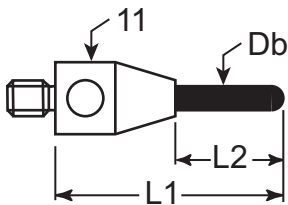
***NOTE: For a silicon nitride ball, add -SN to any part number.**

M5 Threads



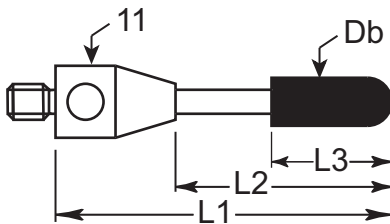
Red dot styli master probe

Part Number	Db	L1	L2	Ds	Wt
RD-MP	8.0	63.5	50.5	6.0	12



Ruby cylinder styli - 0.6 to 1.5 mm

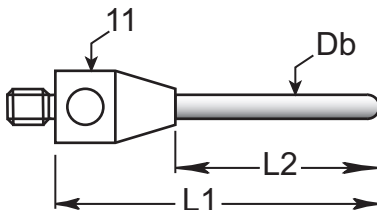
Part Number	Db	L1	L2	Wt
TM5-1019-B	1.0	19.0	9.0	6
TM5-1514-B	1.5	14.0	4.0	6
TM5-1519-B	1.5	19.0	9.0	6



Ruby cylinder styli - 2.0 to 4.0 mm

Part Number	Db	L1	L2	L3	Wt
TM5-2020-B	2.0	20.0	10.0	7.2	6
TM5-2025-B	2.0	25.0	15.0	7.2	6
TM5-2030-B	2.0	30.0	20.0	7.2	7
TM5-2035-B	2.0	35.0	25.0	7.2	7
TM5-2040-B	2.0	40.0	30.0	7.2	7
TM5-4020-B	4.0	20.0	10.0	10.0	7
TM5-4025-B	4.0	25.0	15.0	10.0	7
TM5-4030-B	4.0	30.0	20.0	10.0	7
TM5-4040-B	4.0	40.0	30.0	10.0	8
TM5-4045-B	4.0	45.0	35.0	10.0	8
TM5-4050-B	4.0	50.0	40.0	10.0	8

Carbide cylinder styli - 1.0 to 5.0 mm

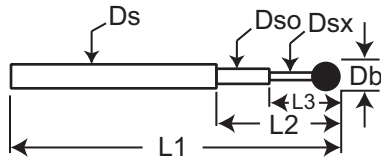


Part Number	Db	L1	L2	Wt
TM5-1020-BC	1.0	20.0	10.0	6
TM5-1030-BC	1.0	30.0	20.0	6
TM5-1040-BC	1.0	40.0	30.0	6
TM5-1514-BC	1.5	14.0	4.0	6
TM5-1520-BC	1.5	20.0	10.0	6
TM5-1530-BC	1.5	30.0	20.0	7
TM5-1540-BC	1.5	40.0	30.0	7
TM5-2020-BC	2.0	20.0	10.0	6
TM5-2030-BC	2.0	30.0	20.0	7
TM5-2040-BC	2.0	40.0	30.0	7
TM5-3025-BC	3.0	25.0	15.0	7
TM5-3050-BC	3.0	50.0	40.0	8
TM5-30100-BC	3.0	100.0	90.0	10
TM5-30130-BC	3.0	130.0	120.0	11
TM5-5050-BC	5.0	50.0	40.0	8
TM5-50100-BC	5.0	100.0	90.0	13

***NOTE: For a silicon nitride ball, add -SN to any part number.**

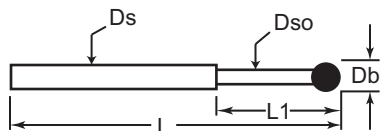
M5 Threads

0.3 to 0.5 mm carbide ball unthreaded styli



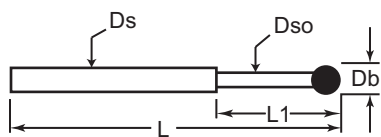
Part Number	Db	Ds	Dso	Dsx	L1	L2	L3	Wt
TST-0310-C	0.3	1.0	0.5	0.20	10.0	4.2	1.3	<1
TST-0315-C	0.3	1.0	0.5	0.20	15.0	4.2	1.3	<1
TST-0325-C	0.3	1.0	0.5	0.20	25.0	4.2	1.3	<1
TST-0410-C	0.4	1.0	0.5	0.25	10.0	5.0	2.0	<1
TST-0415-C	0.4	1.0	0.5	0.25	15.0	5.0	2.0	<1
TST-0425-C	0.4	1.0	0.5	0.25	25.0	5.0	2.0	<1
TST-0510-C	0.5	1.0	0.6	0.35	10.0	5.0	2.5	<1
TST-0515-C	0.5	1.0	0.6	0.35	15.0	5.0	2.5	<1
TST-0525-C	0.5	1.0	0.6	0.35	25.0	5.0	2.5	<1

0.6 mm carbide ball unthreaded styli



Part Number	Db	Ds	Dso	L1	L2	Wt
TST-0610-C	0.6	1.0	0.4	10.0	4.0	<1
TST-0615-C	0.6	1.0	0.4	15.0	4.0	<1
TST-0620-C	0.6	1.0	0.4	20.0	4.0	<1
TST-0625-C	0.6	1.0	0.4	25.0	4.0	<1

0.3 to 1.0 mm unthreaded styli



Part Number	Db	L1	L2	Ds	Dso	Wt
TST-0308-R	0.3	8.0	2.3	1.0	0.2	<1
TST-0310-R	0.3	10.0	2.3	1.0	0.2	<1
TST-0310.5-R	0.3	10.5	2.3	1.0	0.2	<1
TST-0315-R	0.3	15.0	2.3	1.0	0.2	<1
TST-0510-R	0.5	10.0	2.5	1.0	0.3	<1
TST-0515-R	0.5	15.0	2.5	1.0	0.3	<1
TST-0525-R	0.5	25.0	2.5	1.0	0.3	<1
TST-0610	..6	10.0	4.0	1.0	0.4	<1
TST-0615	0.6	15.0	4.0	1.0	0.4	<1
TST-0620	0.6	20.0	4.0	1.0	0.4	<1
TST-0715	0.7	15.0	4.0	1.0	0.5	<1
TST-0725	0.7	25.0	4.0	1.0	0.5	<1
TST-0810	0.8	10.0	4.0	1.0	0.6	<1
TST-0815	0.8	15.0	4.0	1.0	0.6	<1
TST-0820	0.8	20.0	4.0	1.0	0.6	<1
TST-0825	0.8	25.0	4.0	1.0	0.6	<1
TST-1010	1.0	10.0	5.0	1.0	0.7	<1
TST-1015	1.0	15.0	5.0	1.0	0.7	<1
TST-1020	1.0	20.0	5.0	1.0	0.7	<1
TST-1025	1.0	25.0	5.0	1.0	0.7	<1
TST-1030	1.0	30.0	5.0	1.0	0.7	<1
TST-1035	1.0	35.0	5.0	1.0	0.7	<1

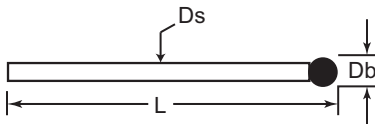
*Note: On 0.8 mm unthreaded styli, a tapered shaft (p.5) is available at the same cost. Add "-T" to part number for a tapered shaft.

***NOTE: For a silicon nitride ball, add -SN to any part number.**

M5 Threads

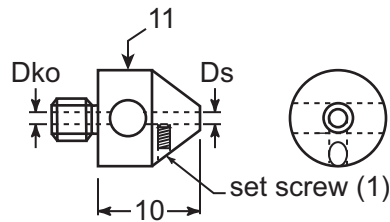
1.0 to 6.0 mm unthreaded styli

Part Number	Db	L	Ds	Wt
TST-1010-DS7	1.0	10.0	0.7	<1
TST-1015-DS7	1.0	15.0	0.7	<1
TST-1308	1.35	8.0	1.0	<1
TST-1315	1.35	15.0	1.0	<1
TST-1320	1.35	20.0	1.0	<1
TST-1325	1.35	25.0	1.0	<1
TST-1335	1.35	35.0	1.0	<1
TST-1508	1.5	8.0	1.0	<1
TST-1515	1.5	15.0	1.0	<1
TST-1520	1.5	20.0	1.0	<1
TST-1525	1.5	25.0	1.0	<1
TST-1530	1.5	30.0	1.0	<1
TST-1535	1.5	35.0	1.0	<1
TST-1540	1.5	40.0	1.0	<1
TST-1550	1.5	50.0	1.0	<1
TST-2015	2.0	12.0	1.5	1
TST-2025	2.0	25.0	1.5	1
TST-2030	2.0	30.0	1.5	1
TST-2035	2.0	35.0	1.5	1
TST-2040	2.0	40.0	1.5	1
TST-2515	2.5	15.0	1.5	1
TST-2525	2.5	25.0	1.5	1
TST-2530	2.5	30.0	1.5	1
TST-2540	2.5	40.0	1.5	1
TST-3025	3.0	25.0	1.5	1
TST-3030	3.0	30.0	1.5	1
TST-3035	3.0	35.0	2.0	1
TST-3040	3.0	43.0	2.0	1
TST-3045	3.0	45.0	2.0	1
TST-3540	3.5	40.0	1.5	1
TST-4030	4.0	30.0	2.0	1
TST-4040	4.0	40.0	2.0	1
TST-5025	5.0	25.0	2.0	1
TST-5045	5.0	45.0	2.0	1
TST-5055	5.0	55.0	2.0	1
TST-5545	5.5	45.0	2.0	1
TST-6015	6.0	15.0	2.0	1
TST-6045	6.0	45.0	2.0	1
TST-6063	6.0	63.0	2.0	1



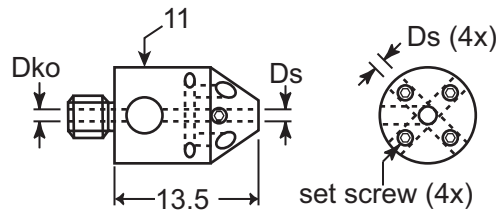
***NOTE: For a silicon nitride ball, add -SN to any part number.**

M5 Threads



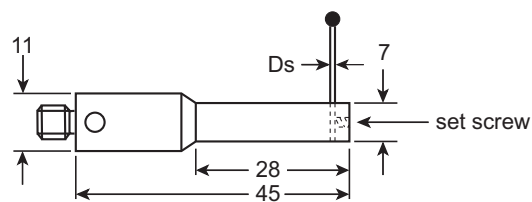
Holder, one unthreaded stylus, axial

Part Number	Ds	Dko	Wt
QC-100	1.0	1.5	5
QC-150	1.5	1.5	5
QC-200	2.0	1.5	5



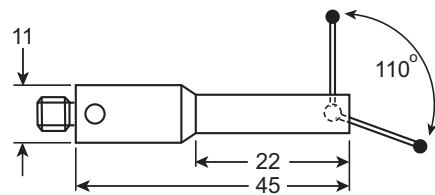
Holder, one to five unthreaded styli, radial (star)

Part Number	Ds	Dko	Wt
PH-100	1.0	1.5	8
PH-150	1.5	1.5	8
PH-200	2.0	1.5	8



Holder, one unthreaded stylus, right angle

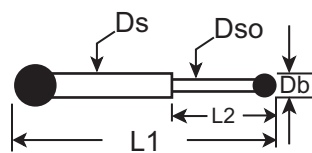
Part Number	Ds	Wt
PH-10	1.0	22
PH-15	1.5	22
PH-20	2.0	22



Holder, tilting stylus

Part Number	Wt
SPH-4011	15

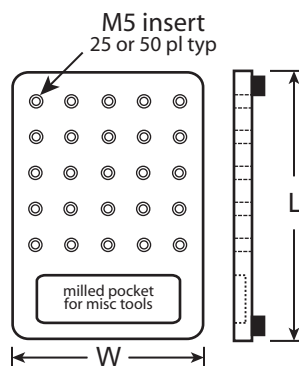
Tilting styli



Part Number	Db	Ds	Dso	L1	L2	Wt
SPR-0317	0.3	1.0	0.2	17.0	1.3	1
SPR-0517	0.5	1.0	0.3	17.0	2.5	1
SPR-0617	0.6	1.0	0.4	17.0	4.0	1
SPR-0817	0.8	1.0	0.6	17.0	4.0	1
SPR-1017	1.0	1.0	0.7	18.0	5.0	1
SPR-2028	2.0	1.0	--	29.0	--	2
SPR-3028	2.0	1.0	--	29.0	--	2

Probe trays

Lightweight polymer with stainless steel M5 inserts. Sits on the CMM table. Keeps styli and tools close at hand.

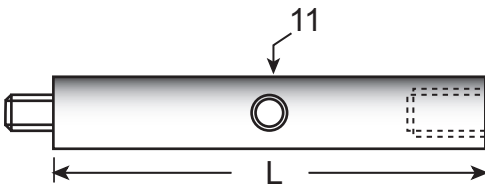


Part Number	L	W	# of holes
TM5-25	7"	5.5"	25
TM5-50	7"	10.5"	50

***NOTE: For a silicon nitride ball, add -SN to any part number.**

M5 Threads

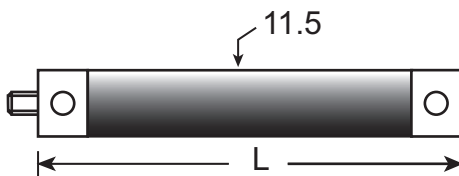
Extensions, aluminum, 11 mm diameter Solid aluminum with brass lined thru hole



Part Number	L	Wt
VM5-12.10-A	10.0	3
VM5-12.15-A	15.0	4
VM5-12.20-A	20.0	6
VM5-12.25-A	25.0	7
VM5-12.30-A	30.0	9
VM5-12.35-A	35.0	9
VM5-12.40-A	40.0	10
VM5-12.45-A	45.0	12
VM5-12.50-A	50.0	14
VM5-12.55-A	55.0	16
VM5-12.60-A	60.0	17
VM5-12.70-A	70.0	19
VM5-12.75-A	75.0	21
VM5-12.80-A	80.0	22

Part Number	L	Wt
VM5-12.90-A	90.0	24
VM5-12.100-A	100.0	26
VM5-12.110-A	110.0	29
VM5-12.120-A	120.0	33
VM5-12.125-A	125.0	36
VM5-12.130-A	130.0	38
VM5-12.135-A	135.0	38
VM5-12.150-A	150.0	40
VM5-12.160-A	160.0	42
VM5-12.180-A	180.0	46
VM5-12.200-A	200.0	50
VM5-12.210-A	210.0	52
VM5-12.220-A	220.0	54
VM5-12.320-A	320.0	80

Extensions, graphite, 11.5 mm diameter Graphite tubing with aluminum fittings

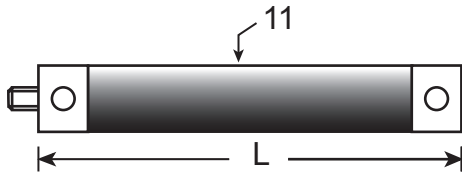


Part Number	L	Wt
VM5-12.40-G	40.0	7
VM5-12.50-G	50.0	7
VM5-12.60-G	60.0	8
VM5-12.70-G	7.0	8
VM5-12.75-G	75.0	8
VM5-12.80-G	80.0	8
VM5-12.90-G	90.0	9
VM5-12.100-G	100.0	9
VM5-12.120-G	120.0	10
VM5-12.130-G	130.0	10

Part Number	L	Wt
VM5-12.140-G	140.0	10
VM5-12.150-G	150.0	10
VM5-12.160-G	160.0	11
VM5-12.170-G	170.0	11
VM5-12.180-G	180.0	11
VM5-12.200-G	200.0	12
VM5-12.240-G	240.0	13
VM5-12.250-G	250.0	13
VM5-12.325-G	325.0	15
VM5-12.500-G	500.0	21

M5 Threads

Low expansion graphite tubing with titanium end fittings

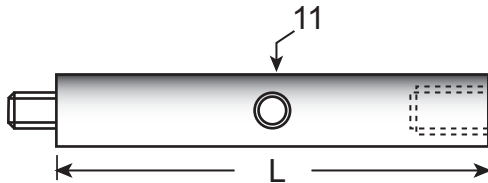


Extensions, Therm-X™, 11 mm diameter

Part Number	L	Wt
VM5-12.40-TX	40.0	9
VM5-12.50-TX	50.0	9
VM5-12.60-TX	60.0	10
VM5-12.70-TX	70.0	9
VM5-12.75-TX	75.0	10
VM5-12.80-TX	80.0	10
VM5-12.100-TX	100.0	10
VM5-12.110-TX	110.0	10
VM5-12.120-TX	120.0	12
VM5-12.125-TX	125.0	12

Part Number	L	Wt
VM5-12.140-TX	140.0	12
VM5-12.150-TX	150.0	12
VM5-12.180-TX	180.0	13
VM5-12.200-TX	200.0	14
VM5-12.220-TX	150.0	14
VM5-12.225-TX	180.0	15
VM5-12.235-TX	200.0	15
VM5-12.250-TX	250.0	16
VM5-12.300-TX	300.0	18
VM5-12.400-TX	400.0	20

Solid titanium

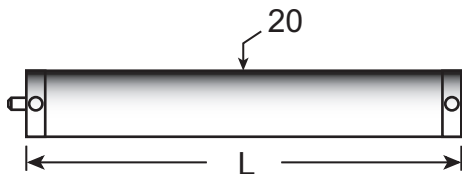


Extensions, titanium, 11 mm diameter

Part Number	L	Wt
VM5-12.10-T	10.0	5
VM5-12.15-T	15.0	7
VM5-12.20-T	20.0	8
VM5-12.25-T	25.0	10
VM5-12.30-T	30.0	12
VM5-12.35-T	35.0	14
VM5-12.40-T	40.0	16
VM5-12.50-T	50.0	20
VM5-12.60-T	60.0	25
VM5-12.70-T	70.0	29
VM5-12.75-T	75.0	31
VM5-12.80-T	80.0	34
VM5-12.85-T	85.0	36
VM5-12.90-T	90.0	38
VM5-12.100-T	100.0	43

Part Number	L	Wt
VM5-12.110-T	110.0	48
VM5-12.120-T	120.0	52
VM5-12.125-T	125.0	54
VM5-12.130-T	130.0	56
VM5-12.135-T	135.0	57
VM5-12.140-T	140.0	61
VM5-12.150-T	150.0	65
VM5-12.160-T	160.0	70
VM5-12.180-T	180.0	79
VM5-12.200-T	200.0	88
VM5-12.225-T	225.0	100
VM5-12.250-T	250.0	109
VM5-12.300-T	225.0	133
VM5-12.325-T	250.0	142

Seamless aluminum tubing with aluminum end fittings

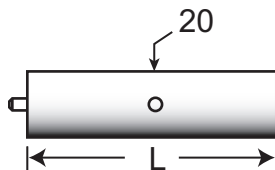


Extensions, aluminum, 20 mm diameter

Part Number	L	Wt
VM5-20.50-A	50.0	18
VM5-20.60-A	60.0	22
VM5-20.75-A	75.0	24
VM5-20.80-A	80.0	26
VM5-20.90-A	90.0	28
VM5-20.100-A	100.0	30

Part Number	L	Wt
VM5-20.120-A	120.0	35
VM5-20.150-A	150.0	40
VM5-20.200-A	200.0	50
VM5-20.250-A	250.0	60
VM5-20.300-A	300.0	70

Solid stainless steel

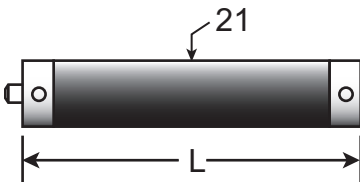


Extensions, stainless steel, 20 mm diameter

Part Number	L	Wt
VM5-20.30-S	30.0	69.6
VM5-20.50-S	50.0	118.4

M5 Threads

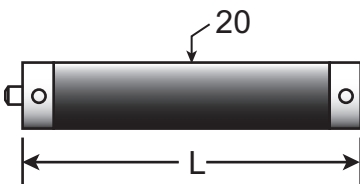
Graphite tubing with aluminum fittings



Extensions, graphite, 21 mm diameter

Part Number	L	Wt	Part Number	L	Wt
VM5-18.40-G	40.0	17	VM5-18.190-G	190.0	33
VM5-18.50-G	50.0	18	VM5-18.200-G	200.0	34
VM5-18.60-G	60.0	19	VM5-18.225-G	225.0	37
VM5-18.80-G	80.0	21	VM5-18.250-G	250.0	40
VM5-18.100-G	100.0	22	VM5-18.285-G	285.0	43
VM5-18.120-G	120.0	23	VM5-18.300-G	300.0	45
VM5-18.150-G	150.0	29	VM5-18.310-G	310.0	46
VM5-18.160-G	160.0	30	VM5-18.350-G	350.0	50
VM5-18.180-G	180.0	32	VM5-18.380-G	380.0	53

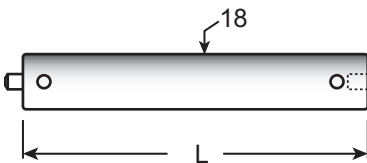
Low expansion graphite tubing with titanium fittings



Extensions, Therm-X, 20 mm diameter

Part Number	L	Wt	Part Number	L	Wt
VM5-20.32-TX	32.0	16	VM5-20.190-TX	190.0	33
VM5-20.40-TX	40.0	17	VM5-20.200-TX	200.0	34
VM5-20.50-TX	50.0	18	VM5-20.230-TX	230.0	38
VM5-20.60-TX	60.0	19	VM5-20.250-TX	250.0	40
VM5-20.70-TX	70.0	20	VM5-20.275-TX	275.0	42
VM5-20.80-TX	80.0	21	VM5-20.300-TX	300.0	45
VM5-20.95-TX	95.0	22	VM5-20.380-TX	380.0	53
VM5-20.100-TX	100.0	22	VM5-20.400-TX	400.0	55
VM5-20.120-TX	120.0	25	VM5-20.440-TX	440.0	61
VM5-20.125-TX	125.0	26	VM5-20.685-TX	685.0	81
VM5-20.150-TX	150.0	29			

Seamless titanium tubing with titanium fittings

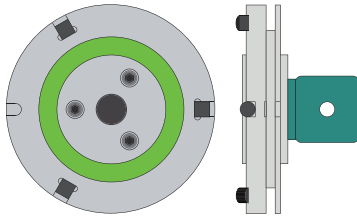


Extensions, titanium, 18 mm diameter

Part Number	L	Wt	Part Number	L	Wt
VM5-18.40-TT	40.0	18	VM5-18.145-TT	145.0	60
VM5-18.50-TT	50.0	22	VM5-18.150-TT	150.0	70
VM5-18.55-TT	55.0	24	VM5-18.160-TT	160.0	26
VM5-18.60-TT	60.0	26	VM5-18.170-TT	170.0	28
VM5-18.75-TT	75.0	28	VM5-18.180-TT	180.0	30
VM5-18.80-TT	80.0	30	VM5-18.200-TT	200.0	35
VM5-18.90-TT	90.0	35	VM5-18.250-TT	250.0	40
VM5-18.100-TT	100.0	40	VM5-18.285-TT	285.0	50
VM5-18.120-TT	120.0	50	VM5-18.300-TT	300.0	60

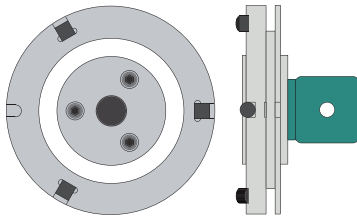
M5 Threads

VAST-XT adapter plate, with cube, and ID chip



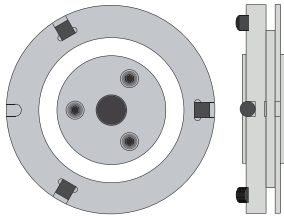
Part Number	Wt
VAS-1054	146

VAST-XT adapter plate, with cube, no ID chip



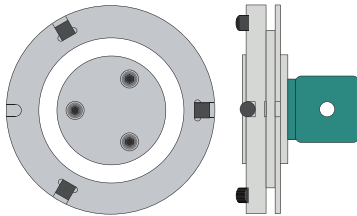
Part Number	Wt
VAS-XT-9010-C	161

VAST-XT adapter plate, no cube, no ID chip



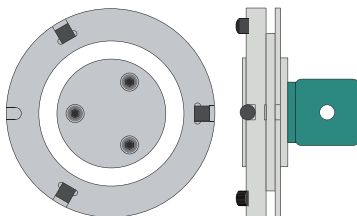
Part Number	Wt
VAS-XT-9010	161

VAST adapter plate, with cube, no ID chip



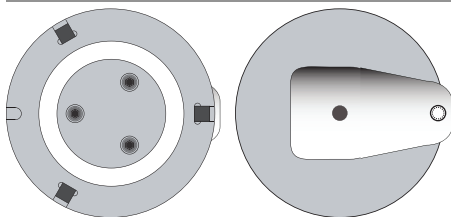
Part Number	Wt
VAS-8574	146

Universal adapter plate, with cube, no ID chip



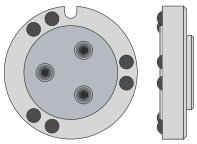
Part Number	Wt
UAP-8573	161

VAST adapter plate, with 32.5 mm titanium offset



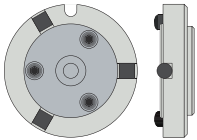
Part Number	Wt
VAS-9116	179

M5 Threads



ST2 adapter plate

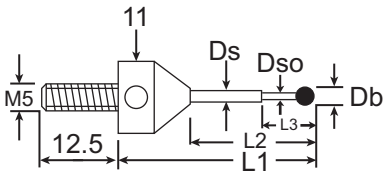
Part Number	Wt
ST2-8251	75



ST3 adapter plate

Part Number	Wt
ST3-8251	71

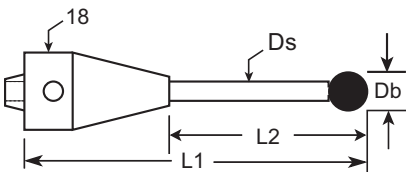
Multi-socket adapter styli for measuring probe heads



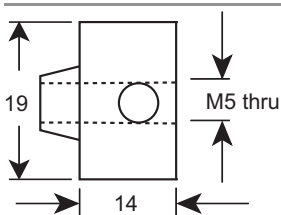
Part Number	Db	Ds	Dso	L1	L2	L3	Wt
MSA-0322	0.3	1.0	0.2	21.8	12.8	2.3	7
MSA-0522	0.5	1.0	0.3	22.0	13.0	2.5	7
MSA-0622	0.6	1.0	0.4	22.1	13.1	4.0	7
MSA-0822	0.8	1.0	0.4	22.3	13.3	4.0	7
MSA-1023	1.0	1.0	0.7	22.5	13.5	5.0	7
MSA-1324	1.35	1.0	--	24.0	15.0	--	7
MSA-1332	1.35	1.0	--	32.9	23.9	--	7
MSA-1533	1.5	1.0	--	33.0	24.0	--	7
MSA-2033	2.0	1.5	--	33.5	24.5	--	8
MSA-2534	2.5	1.5	--	34.0	25.0	--	8
MSA-3034	3.0	2.0	--	34.5	25.5	--	10
MSA-5043	5.0	3.5	--	43.5	34.5	--	12

Tapered base styli

for measuring probe heads without probe changers



Part Number	Db	Ds	L1	L2
CDC-3050-28	3.0	2.0	50.0	21.5
CDC-3075-40	3.0	2.0	75.0	35.0
CDC-3075-25	3.0	2.0	75.0	50.0
CDC-30115-97	3.0	2.0	115.0	18.0
CDC-5075-40	5.0	3.5	75.0	35.0
CDC-5075-25	5.0	3.5	75.0	50.0
CDC-50100-40	5.0	3.5	100.0	60.0
CDC-8080-23	8.0	5.0	80.0	57.0
CDC-80100-40	8.0	5.0	100.0	60.0
CDC-80115-58	8.0	5.0	115.0	56.5
CDC-80140-40	8.0	5.0	140.0	100.0



Tapered base to M5 thread adapter

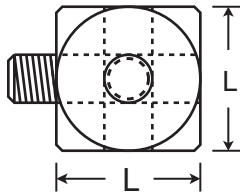
for measuring probe heads without probe changers

Part Number	Wt
ADP-0001	31

***NOTE: For a silicon nitride ball, add -SN to any part number.**

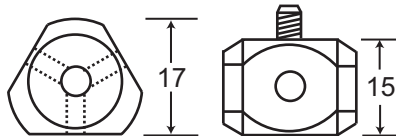
M5 Threads

Cubes, 90 degree (six sided)



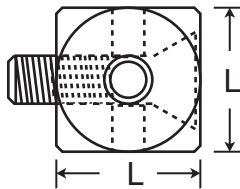
Part Number	L	Wt	Material
WM5-15	15	7	Aluminum
WM5-15-T	15	12	Titanium
WM5-20	20	18	Aluminum
WM5-20-T	20	27	Titanium

Cubes, 120 degree (five sided)



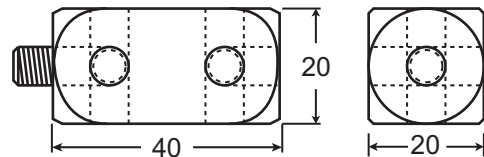
Part Number	Wt	Material
WM5-15-3	9	Aluminum
WM5-15-3-T	13	Titanium

Cube, 90 degree (six sided) with countersunk hex screw



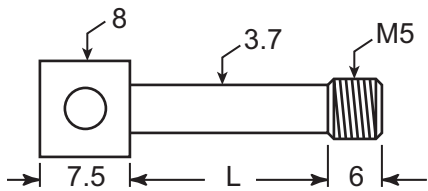
Part Number	L	Wt	Material
WM5-15-T-C	15	12	Titanium

Cube, 90 degree, double length



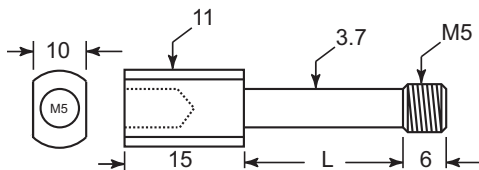
Part Number	Wt	Material
WM5-40	35	Aluminum

Captive screws



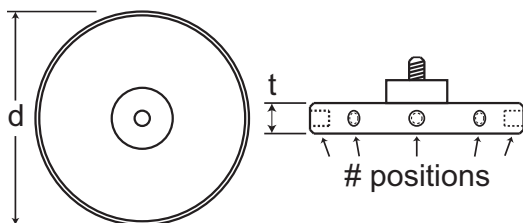
Part Number	L	Wt
SM5-15	15	4
SM5-20	20	5
SM5-25	25	6

Rotary screws



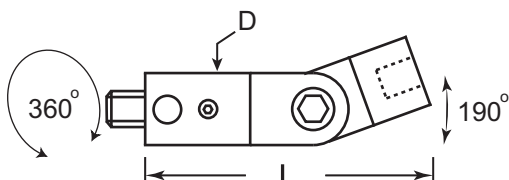
Part Number	L	Wt
SM5-15-M5	15	5
SM5-20-M5	20	6

Multiple position hubs



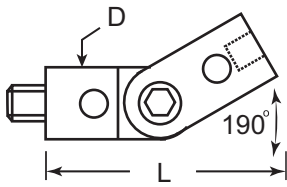
Part Number	# positions	d	t	Wt
HUB-5	5	35	13	34
HUB-6	6	40	13	49
HUB-8	8	60	13	60
HUB-12	12	75	13	79

Knuckle joint with rotational adjustment



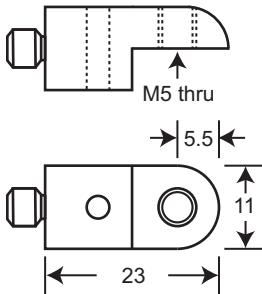
Part Number	D	L	Wt	Material
RJM5-15	11	43	17	Titanium

M5 Threads



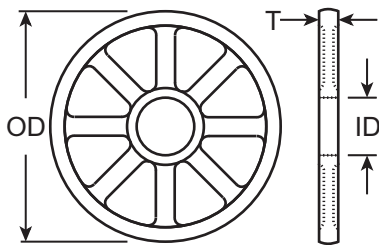
Knuckle joints

Part Number	D	L	Wt	Material
JM5-15	11	35	9	Aluminum
JM5-15-T	11	35	13	Titanium
JM5-20	18	36	24	Aluminum
JM5-20-T	18	36	36	Titanium



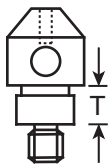
90 degree adapter for M5 styli

Part Number	Wt	Material
JM5-90-T	6.5	Titanium



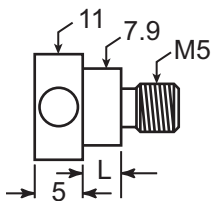
Disks

Part Number	OD	ID	T	Wt
DSK-300	30.0	8.0	3.5	11
DSK-400	40.0	8.0	5.0	20
DSK-500	50.0	8.0	7.0	29
DSK-600	60.0	8.0	8.0	56



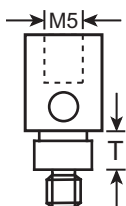
Euro bases for disks

Put a Euro base on any standard Q-Mark stylus for just \$10 more. Simply specify the disk to be used (see DSK part numbers above) and the stylus part number desired.



Disk screws

Part Number	L	Wt
DS-300	3.0	5
DS-400	4.5	5
DS-500	6.5	6
DS-600	7.5	6



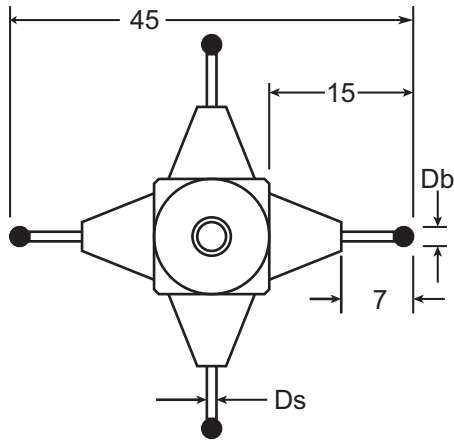
Euro threaded adapter for disks

Accepts most M5 styli

Part Number	L	Wt
EURO-300	3.0	9
EURO-400	4.5	9
EURO-500	6.5	10
EURO-600	7.5	11

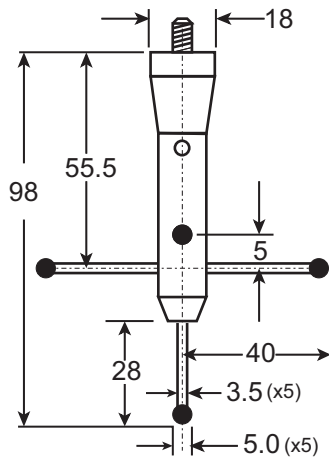
M5 Threads

Cube stars



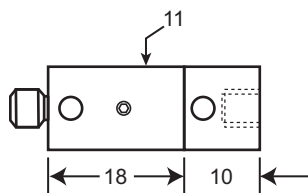
Part Number	Db	Ds	Wt
WMS-1045	1.0	0.7	9
WMS-1045-WF	1.0	0.7	9
WMS-1545	1.5	1.0	9
WMS-1545-3	1.5	1.0	9
WMS-2045	2.0	1.5	9
WMS-2045-3	2.0	1.5	9
WMS-2045-WF	2.0	1.5	9
WMS-2545	2.5	1.5	9
WMS-3545	3.5	2.5	10

Classic star probe



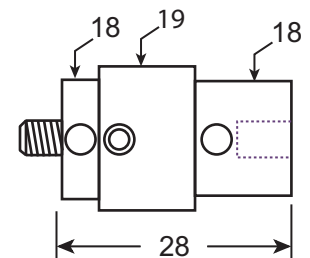
Part Number	Wt
STR-500	65

Rotary adapters



11 mm diameter

18 mm diameter



1.5 mm hex wrench included.

Part Number	Wt	Material
RAP-1128-T	10.5	Titanium

Part Number	Wt	Material
RAP-1830	21.9	Aluminum

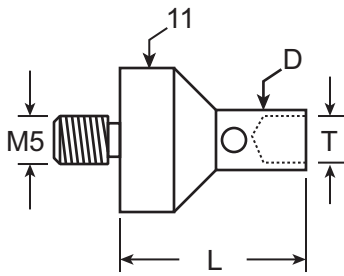
Carbide tip scribes



Part Number	a	Wt
TM5-S30-30-C	30°	2
TM5-S60-30-C	60°	2
TM5-S90-30-C	90°	2

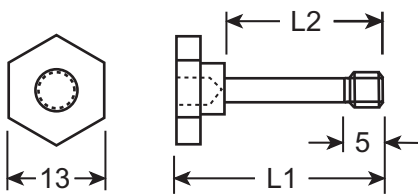
***NOTE: For a silicon nitride ball, add -SN to any part number.**

M5 Threads



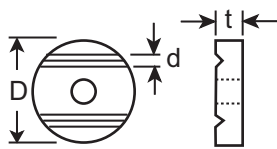
Thread adapters

Part Number	D	T	Wt
RM5-M2	3	M2	5
RM5-M3	4	M3	5
RM5-M4	7	M4	6



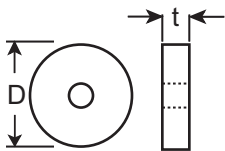
Hex bolts

Part Number	L1	L2	Wt
HM5-15	15.0	7.0	7
HM5-18	18.0	10.0	9
HM5-30	30.0	21.0	16
HM5-35	35.0	26.0	28



Grooved titanium washers for star styli

Part Number	D	t	d	Wt
WSP-11-G	11.0	1.5	1.0-1.5	1
WSP-19-G	19.0	2.0	2.0-3.5	2



Flat titanium washers for star styli

Part Number	D	t	Wt
WSP-11	11.0	1.5	1
WSP-19	19.0	2.0	2

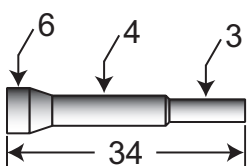


Carbide pins for star styli

Part Number	d	L	Wt
MP-1010	1.0	10.0	1
MP-1510	1.5	10.0	1
MP-2018	2.0	18.0	3
MP-3518	3.5	18.0	6

Probe key - golf tee style

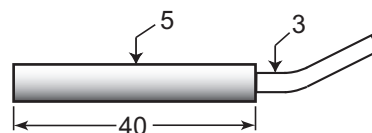
Hardened tool steel.



Part Number
PK-5-GT

Probe key - offset style

Hardened tool steel with stainless steel handle.



Part Number
PK-5

M5 Threads

VAST probe racks



VAST Rack

Probe bays sold separately.

Part Number	X axis size (mm)	Tiers
VAS-PCM-550	550	Single
VAS-PCM-550-X	550	Double
VAS-PCM-700	700	Single
VAS-PCM-700-X	700	Double
VAS-PCM-1000	1000	Single
VAS-PCM-1000-X	1000	Double



VAST bays

Part Number
 VAS-BAY



ST bays

Part Number
 PS-1760



PCM-550-X
 with six probe bays

ST probe racks

Part Number	X axis size (mm)	Tiers
PCM-550	550	Single
PCM-550-X	550	Double
PCM-700	700	Single
PCM-700-X	700	Double
PCM-1000	1000	Single
PCM-1000-X	1000	Double
PCM-1600	1600	Single
PCM-1600-X	1600	Double

Probe bays sold separately.

PCM-Mini rack

Part Number
 PCM-MINI

Mini probe change rack with two levels, 720 mm wide x 450 mm tall. Bolts to CMM table with stainless cap screw (included). Holds probe bays for XXT, RDS and/or VAST (VAST bays shown). Probe bays sold separately.



Cube Squared / X-Changer



The CUBE SQUARED™

In one minute or less, our new CUBE SQUARED squares up VAST and VAST-XT adapter plate cubes to the CMM axis. No other tools needed. It's fast, accurate, and unconditionally guaranteed. Patent pending.

Part Number

QM-C2

X-Changer™

Automatic Probe Rack for
Zeiss CMMs



Available for:
Eclipse ST
Contura
Prismo
UPMC

- Installs in about 1 hour
- Sits outside measuring range
- Fully compatible with any existing programs
- Easily expandable
- Made in USA



CALL US FOR A QUOTE TO INSTALL AN X-CHANGER ON YOUR CMM!

Calibration Spheres



Calibration spheres

Part Number	Diameter	Material	Part Number	Diameter	Material
CAL-DK5	5.0	Ruby	CAL-DK15	15.0	Ceramic
CAL-DK8	8.0	Ruby	CAL-DK20	20.0	Ceramic
CAL-DK10	10.0	Ruby	CAL-DK25	25.0	Ceramic
CAL-DK12	12.0	Ruby	CAL-DK25.4	25.4	Ceramic
CAL-DK14	14.0	Ceramic	CAL-DK30	30.0	Ceramic



Calibration sphere certificates included with spheres



Calibration sphere base, 45 degree

Part Number	Material
CAL-DKMB	Stainless steel

85 mm dia base x 112 mm high post. Accepts any calibration sphere listed above. Stainless steel. Includes stainless M12 cap screw for mounting to CMM. Fits most threaded sub-plates. Calibration spheres sold separately.



Dual calibration sphere base

Part Number	Material
CAL-DKMB-DE	Stainless steel

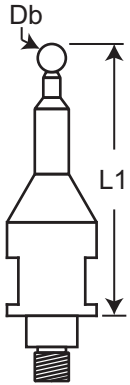
85 mm dia base x 112 mm high post. Accepts any calibration spheres listed above. Stainless steel. Includes stainless M12 cap screw for mounting to CMM. Fits most threaded sub-plates. Calibration spheres sold separately.



Adapter plate for Klingenberg gear measuring centers

Part Number	Wt
KGMC-2000	65

FARO styli with metric balls

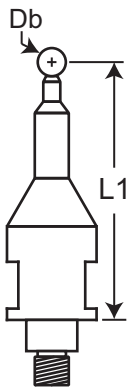


Part Number	Db	L1
QMFARO-15	1.5	47.05
QMFARO-30	3.0	47.05

Part Number	Db	L1
QMFARO-40	4.0	44.00
QMFARO-50	5.0	44.00
QMFARO-60	6.0	44.00

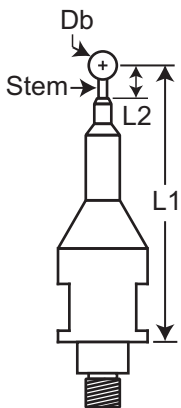


FARO styli with inch balls



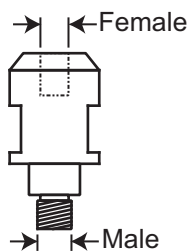
Part Number	Db	L1
QMFARO-1/16	.0625"	1.73"
QMFARO-1/8	.125"	1.73"
QMFARO-1/4	.250"	1.73"
QMFARO-.250-2	.250"	2.0"
QMFARO-5/16	.3125"	1.73"
QMFARO-1/2-CARB	0.5"	1.73"
QMFARO-1-CARB	1.00"	1.73"

FARO styli with 1/4" balls, extra length



Part Number	Db	L1	L2	Stem
QMFARO-.250-4	.250"	4.0"	0.407"	carbide
QMFARO-.250-4-C	.250"	4.0"	0.407"	ceramic
QMFARO-.250-4-G	.250"	4.0"	0.407"	graphite

FARO thread adapters

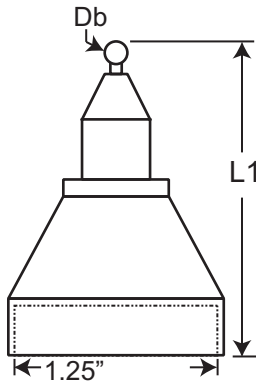


Part Number	Male	Female
QFA-NM2	M6	M2
QFA-NM3	M6	M3
QFA-NM4	M6	M4
QFA-NM5	M6	M5

Part Number	Male	Female
QFA-OM2	3/8"	M2
QFA-OM3	3/8"	M3
QFA-OM4	3/8"	M4
QFA-OM5	3/8"	M5

***NOTE: For a silicon nitride ball, add -SN to any part number.**

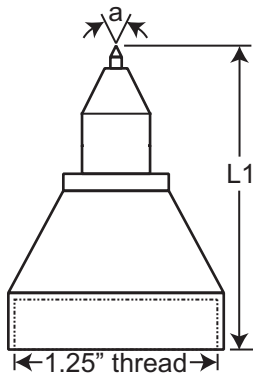
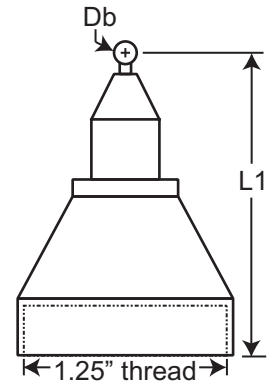
***NOTE: For a zirconia ball, add -Z to any part number.**



FARO styli - metric size balls

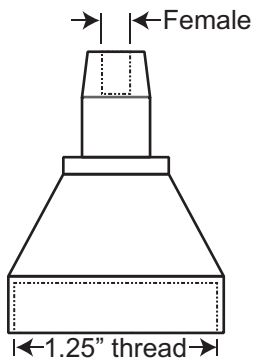
Part Number	d	L1
QMFP-2	2.0	61.55

Part Number	d	L1
QMFP-3	3.0	57.00
QMFP-3.5	3.5	47.05
QMFP-4	4.0	47.05
QMFP-5	5.0	44.00
QMFP-6	6.0	44.00



FARO styli - carbide point

Part Number	a
QMFP-S30-C	30°
QMFP-S60-C	60°
QMFP-S90-C	90°



FARO thread adapters

Part Number	Female
QFT-M5	M5
QFT-M6	M6
QFT-M8	M8

***NOTE:** For a silicon nitride ball, add -SN to any part number.

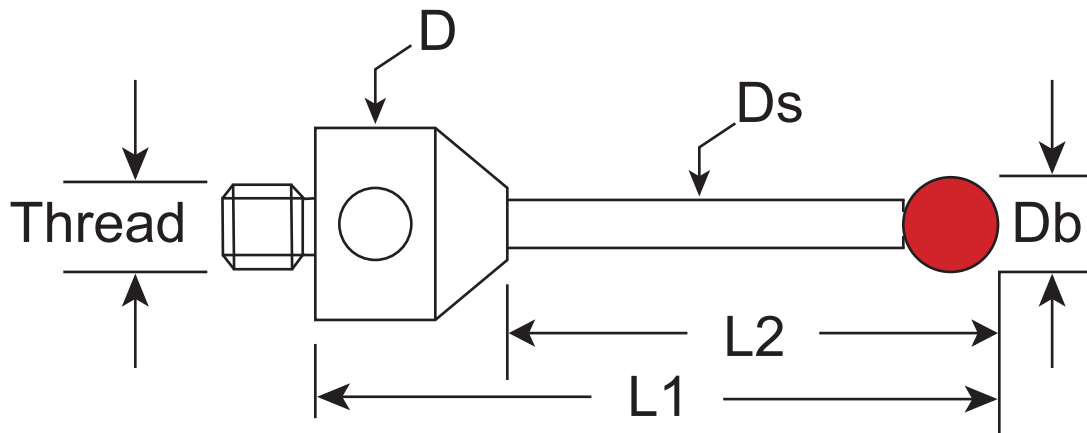
***NOTE:** For a zirconia ball, add -Z to any part number.

Design Your Own™ Probe



DESIGN YOUR OWN™ STANDARD PROBE

- PHOTOCOPY THIS PAGE
- FILL IN THE BLANKS
- FAX or EMAIL TO Q-MARK
- GET RESPONSE IN 1 or 2 BUSINESS DAYS



Thread	D	Ds	L1	L2	Db	Quantity

Your name _____ Phone _____

Company _____ Email _____

Ball material: ruby silicon nitride ceramic carbide other _____

Stem material: carbide ceramic graphite steel other _____

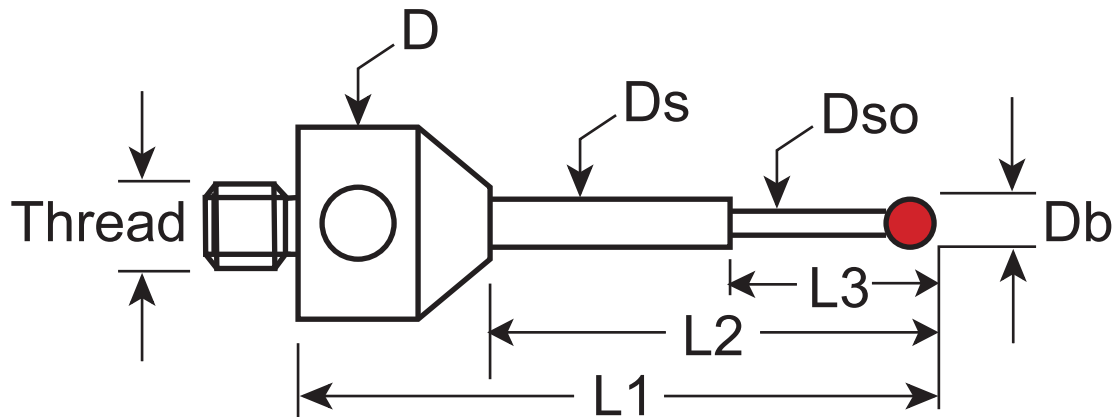
Base material: stainless steel aluminum titanium other _____

Comments / special requirements _____

Design Your Own™ Probe

DESIGN YOUR OWN™ MINIATURE PROBE

- PHOTOCOPY THIS PAGE
- FILL IN THE BLANKS
- FAX or EMAIL TO Q-MARK
- GET RESPONSE IN 1 or 2 BUSINESS DAYS



Thread	D	Ds	Dso	L1	L2	L3	Db	Qty

Your name _____ Phone _____

Company _____ Email _____

Ball material: ruby silicon nitride ceramic carbide other _____

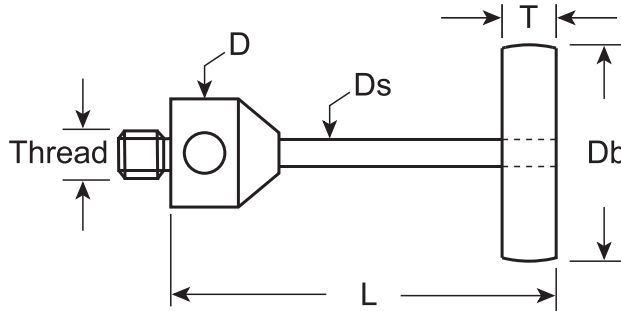
Stem material: carbide ceramic graphite steel other _____

Base material: stainless steel aluminum titanium other _____

Comments / special requirements _____

DESIGN YOUR OWN™ DISK PROBE

- PHOTOCOPY THIS PAGE
- FILL IN THE BLANKS
- FAX or EMAIL TO Q-MARK
- GET RESPONSE IN 1 or 2 BUSINESS DAYS



Thread	D	Ds	L1	L2	T	Db	Quantity

Your name _____ Phone _____

Company _____ Email _____

Ball material: ruby silicon nitride ceramic carbide other _____

Stem material: carbide ceramic graphite steel other _____

Base material: stainless steel aluminum titanium other _____

Comments / special requirements _____



Somos una empresa dedicada a dar soluciones en Metrología Dimensional.

Para cada aplicación y requerimiento en Control de Calidad Dimensional, con nuestra experiencia proponemos la mejor alternativa.

CMMs, Servicio de Medición, Turn key projects, Calibración, Fixtures, Palpadores,

SOLUCION DE MEDICION DIMENSIONAL PARA PIEZAS GRANDES





3D MetriSoft, S.A. de C.V.
Av. Hércules 400 nave 14
Col Poligono Empresarial Santa Rosa
76220 Querétaro, México

Tel. (442) 199 0573
(442) 291 1896

info@3d-metrisoft.com

www.cmms.mx

Tech Center Monterrey

Av. del Parque #216
Regio Parque Industrial
Apodaca N.L. C.P. 66600.
Tel (81) 1777 1974

